

# **MOERS**

Spezialgeräte für Abbruch und Recycling  
Spezialbereich Hydraulik - Hämmer

# **Baumaschinen**



Telefon: +49 (0)2334 / 9066-0 ■ Fax: +49 (0)2334 / 9066-26 ■ Färberstr. 4 ■ 58119 Hagen - Hohenlimburg

# Ersatzteilliste

## Hydraulikhammer EHB 008



Hagen

# INSTRUCTIONS FOR USE

---

- This parts manual describes the configuration of the part components of the product and is intended only to assist to order spare parts for maintenance work
- This manual contains no safety information for operating the product or maintenance work. Please observe the safety instructions described in the relevant operation manual.
- The illustrations shown in this manual is not appropriate for workshop instructions, so they should not be used for assembling or disassembling the product. Please refer to the workshop manual for that purpose.
- Use Everdigm genuine parts only.  
Warranties do not cover damages that have been caused or aggravated by use of non-genuine parts.
- For product warranty, please refer to the warranty conditions provided separately.
- The illustrations in this manual show only the overall shapes and positions of the part components so they may not be identical with the actual parts.
- For the purpose of continued product improvement, some information in this manual could be changed without prior notice, and might be differ from your product which was not covered by this publication.
- If you found the information that is unclear or not corresponding with the actual product, contact Everdigm or Everdigm distributor.

## How to use this parts manual:

<Example>

### EX-20 – CYLINDER UNIT

3	1	4	2	5	6	7	8
ITEM	PART NO.	PART NAME	QTY	S/N	REMARKS		
+	X123-9001	Cylinder Unit	2				
1	X123-1001	Cylinder Housing	1				
2	X123-9002	Rod Cover Ass'y	1				
3	X123-1002	-Rod Cover	-1	~199	[R X123-1002A]		
	X123-1002A	-Rod Cover	-1	200~			
4	A456-2001	-Slide Seal	-2		[K1]		
4-1	A456-2002	--Seal Ring	--1		[K1] [D]		
4-2	A456-2003	--O-Ring	--1		[K1] [D]		
5	A456-2004	-Dust Wiper	-1		[K1]		
6	X123-1003	Rod	1				
7	X124-1005	Piston	1				
⋮	⋮	⋮					

1. Model name: Identification name of the product

2. Title: Title name of the assembly shown in the page

- 
3. Item: Key number which shows the referring number of the part in corresponding illustration.  
For a revised part which replaces the old one with same item number, the item is not shown.  
Item numbers are not always in sequence.  
+..... Represent the title assembly containing the entire part in the illustration.  
\* with the same item number..... Represent selectable parts depending on product version.
4. Part No.: Identification number of the part or assembly.  
The part number might be omitted when the part cannot be supplied separately.
5. Part Name: Part name of the part.  
The parts without a prefix in front of the part name are independent component parts or subassemblies belong to the title assembly in corresponding list.  
Prefix '- '..... The parts marked with the prefix '- ' in front of the part name are component parts belong to the subassembly shown above of the rows of these parts.  
Prefix '-- '... The parts marked with the prefix '-- ' are component parts of the '- ' marked subassembly containing these parts.
6. Qty: Quantity used for one unit of their parent assembly containing the parts.  
When the quantity of the title assembly is blank, refer to the page shown with '►', but when it is not blank, it represents the quantity used for one unit of the product.  
For the parts with the prefix '- ' or '-- ' in front of their part name, the quantity is expressed with that prefix.  
AR... As many as required (variable quantity depending on the product)
7. S/N: Serial number of the product which those parts are applied  
Parts without serial no. indications are used in every product regardless of serial number.
8. Remarks: Supplementary comment. Refer to the following for the code within [ ].  
A..... The parts with this code can be used interchangeably with each other.  
R..... The part with this code is no longer manufactured as a result of a revision and replaced by the new part whose part number follows this code.  
K..... The part with this code is contained in the service kit whose item number follows this code.  
D..... The part with this code cannot be supplied separately. The assembly part containing this part should be ordered.  
S..... Non-standard part which can be supplied by separate order

## How to order parts:

Please note the full model name and serial number of your product. This code can be found on the nameplate of your product. Compare the parts to order with the corresponding parts in the drawings in this parts manual and note the part numbers to order.

When ordering parts, please specify detail part names as shown in the following example,

- Model name of product: EX-20
- Serial number: 135
- Part No.: A123-4567
- Part name: Pin
- Quantity: 2
- Purchaser's name & address: . . . .

**TABLE OF CONTENTS**

---

INSTRUCTIONS FOR USE ..... 2

EHB008 – Product Dimensions..... 5

EHB008 – Power Cell Ass’y ..... 6

EHB008 – Power Cell Ass’y ..... 7

EHB008 – Cylinder Ass’y ..... 9

EHB008 – Seal Kit ..... 10

EHB008 – Tools (Chisels) ..... 11

EHB008 – Bracket Ass’y; BA ..... 13

EHB008 – Bracket Ass’y; NA ..... 15

EHB008 – Gas Charging Kit ..... 17

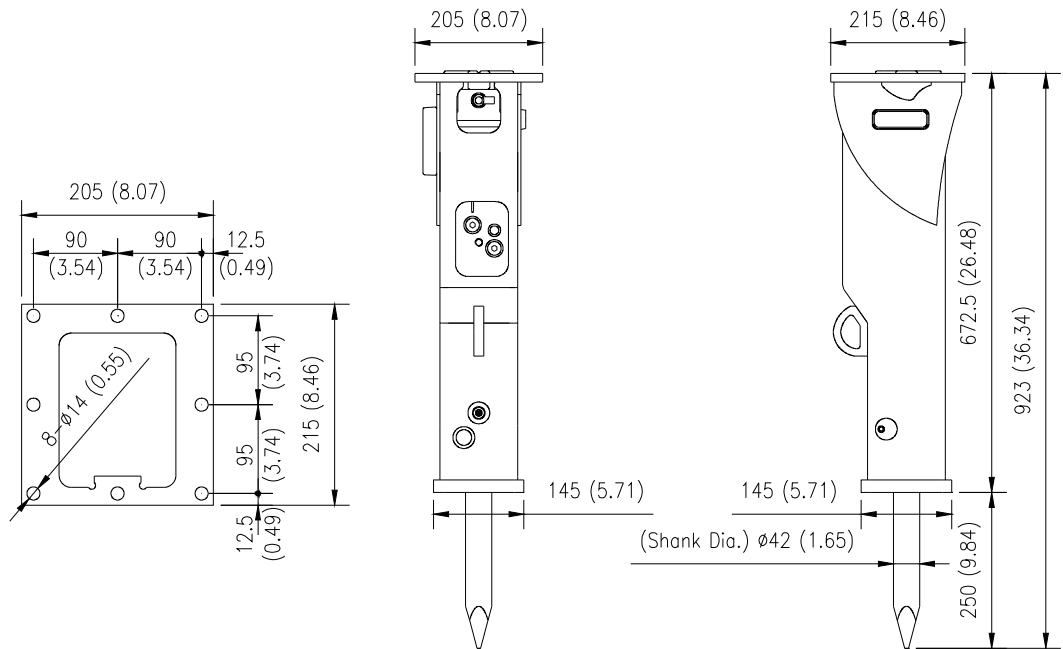
EHB008 – Maintenance Tool Kit ..... 19

Copyright © 2010 Everdigm Corp. All rights reserved.  
This manual is copyrighted by Everdigm Corp. with all rights reserved in accordance with prevailing law. It is positively prohibited to use or reproduce its contents in whole or in part without prior written permission.

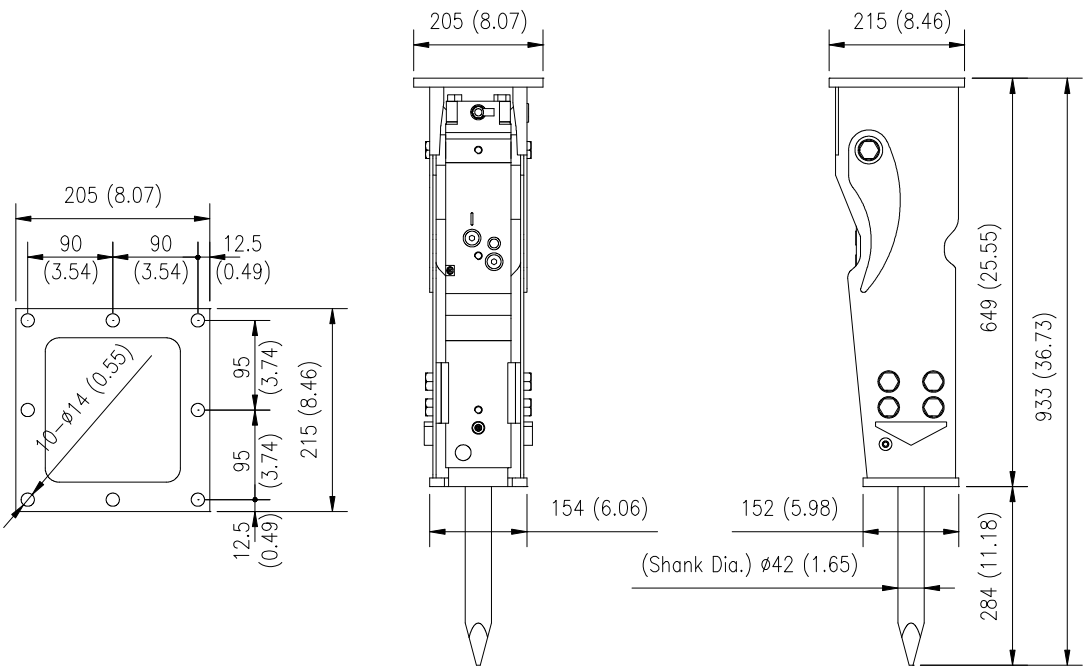
**EHB008 – Product Dimensions**

Unit: mm (inch)

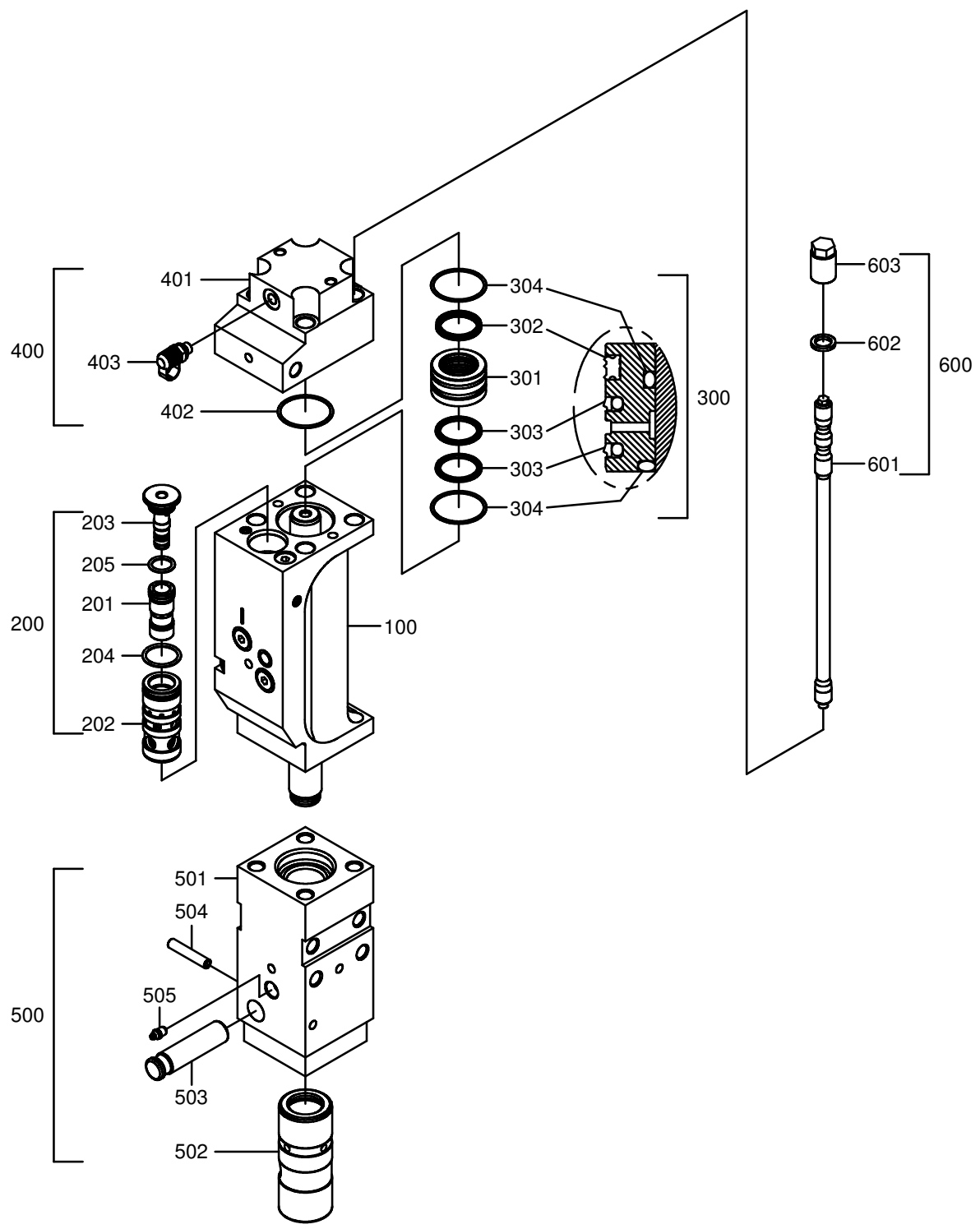
**EHB008-BA**



**EHB008-NA**



EHB008 – Power Cell Ass’y

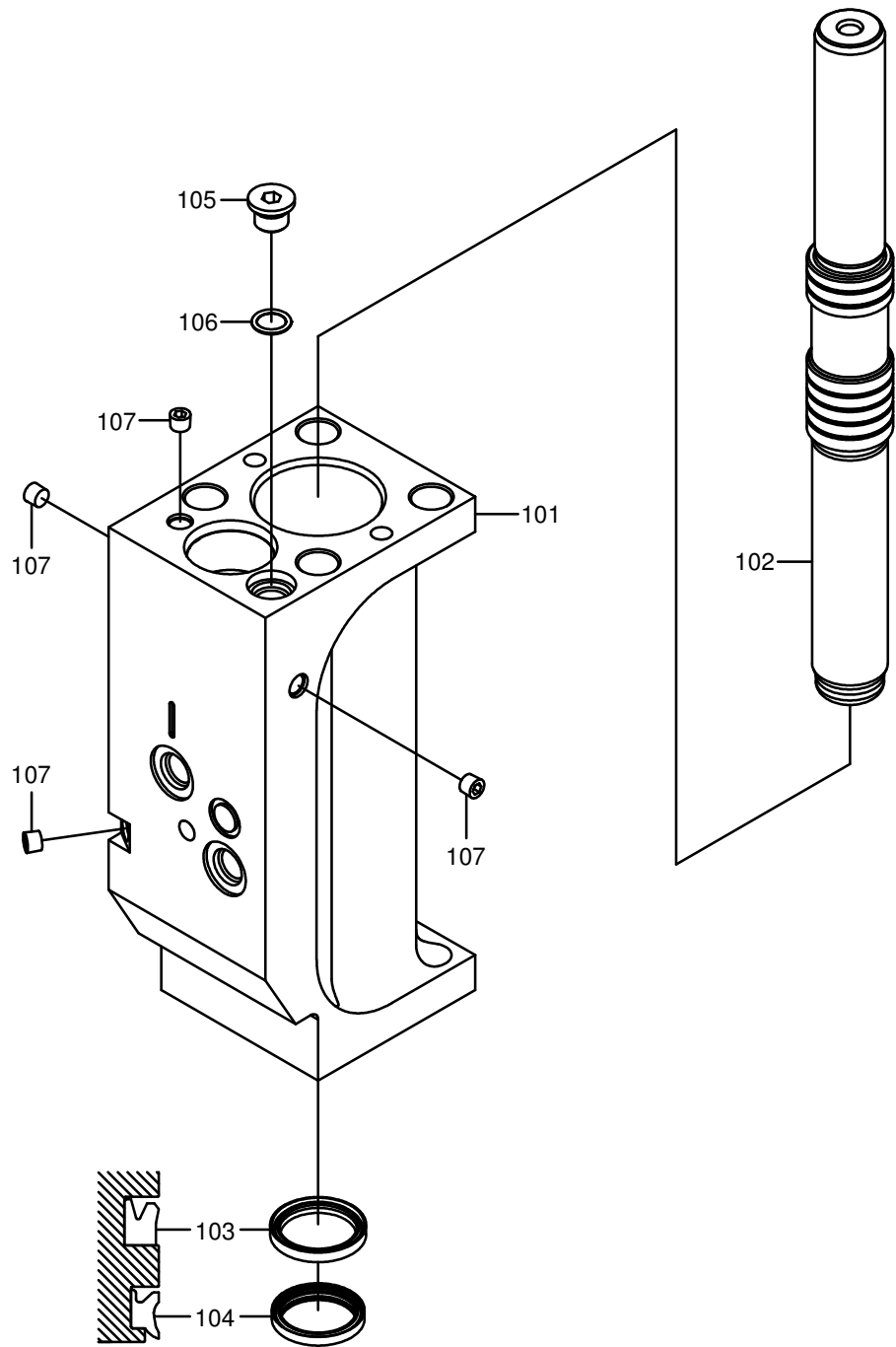


## EHB008 – Power Cell Ass'y

ITEM	PART NO.	PART NAME	QTY	S/N	REMARKS
+	B008-9902	Power-cell Ass'y	1		
100	B008-9811	Cylinder Ass'y	1		
200	B012-9802	Valve Ass'y	1		
201	B012-2001	-Valve	-1		
202	B012-2002	-Valve Bush	-1		
203	B012-2003	-Valve Plug	-1		
204	S8000351	-O-ring	-1		[K4]
205	S8002731	-O-ring	-1		[K4]
300	B008-9813	Cylinder Bush Ass'y	1		
301	B008-1005	-Cylinder Bush	-1		
302	A057-0024	- Gas Seal	-2		[K3]
303	A056-0072	- Step Seal	-2		[K3] [D]
304	S8010551	-O-ring	-2		[K3]
400	B008-9814	Back Head Ass'y	1		
401	B008-4002	-Back Head	-1		[R AB008-0031]
	AB008-0031	-Back Head	-1		
402	S8010551	-O-ring	-1		[K4]
403	A062-0041	-Minimess Coupling	-1		
500	B008-9815	Front Head Ass'y	1		
501	B008-5004	-Front Head	-1		
502	B008-5002	-Front Bush	-1		
503	B008-5003	-Chisel Pin	-1		
504	S5741410	-Spring Pin	-1		
505	S6710042	-Grease Nipple	-1		BSPT 1/8
600	B008-0603	Through Bolt Kit	4		
601	B008-6005	-Through Bolt	-1		
602	S5111013	-Spring Washer	-1		
603	B008-6002	-Back Head Nut	-1		

**EHB008 – Cylinder Ass’y**

---





## EHB008 – Cylinder Ass'y

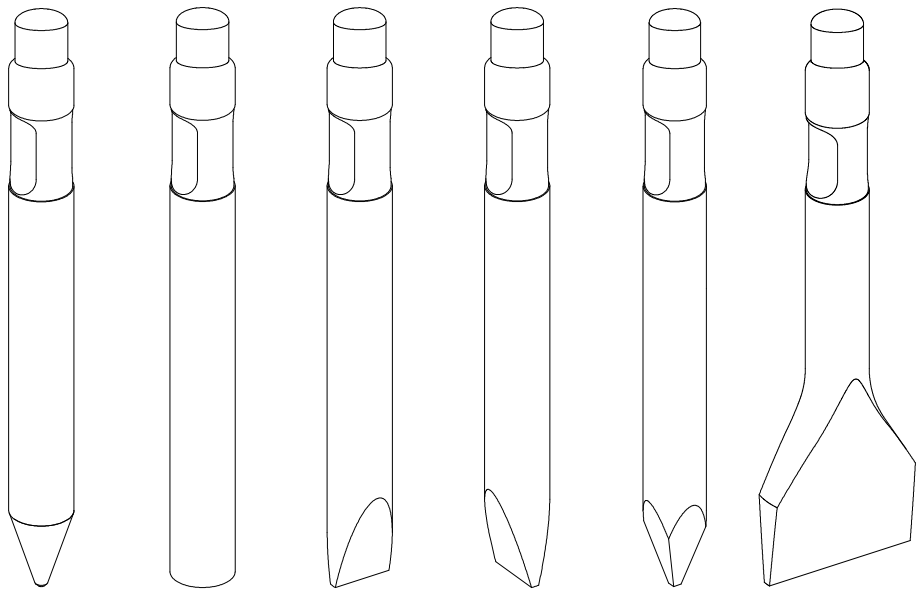
ITEM	PART NO.	PART NAME	QTY	S/N	REMARKS
+	B008-9811	Cylinder Ass'y	1		
101	B008-1004	Cylinder	1		
102	B008-1003	Piston	1		
103	A053-0098	U-Packing	1		[K2]
104	A054-0060	Dust-Seal	1		[K2]
105	2181-1890D3	Plug	3		BSP 3/8
106	S8000141	O-ring	3		[K4]
107	2181-1116D1	Plug	4		BSPT 1/8

## EHB008 – Seal Kit

ITEM	PART NO.	PART NAME	QTY	S/N	REMARKS
K1	AB008-0007	Seal Kit	1		[K2+K3+K4]
K2	AB008-0008	Piston Lower Part Seal Kit	1		
	A053-0098	-U-Packing	-1		
	A054-0060	-Dust-Seal	-1		
K3	AB008-0009	Piston Upper Part Seal Kit	1		
	A057-0024	- Gas Seal	-1		
	A056-0072	- Step Seal	-2		
	S8010551	-O-ring	-2		JIS G60-HsA90
K4	AB008-0010	Normal Seal Kit	1		
	S8000141	-O-ring	-1		JIS P14-HsA90
	S8002731	-O-ring	-1		JIS P22A-HsA90
	S8000351	-O-ring	-1		JIS P35-HsA90
	S8010551	-O-ring	-1		JIS G55-HsA90

**EHB008 – Tools (Chisels)**

TOOL SHAPE



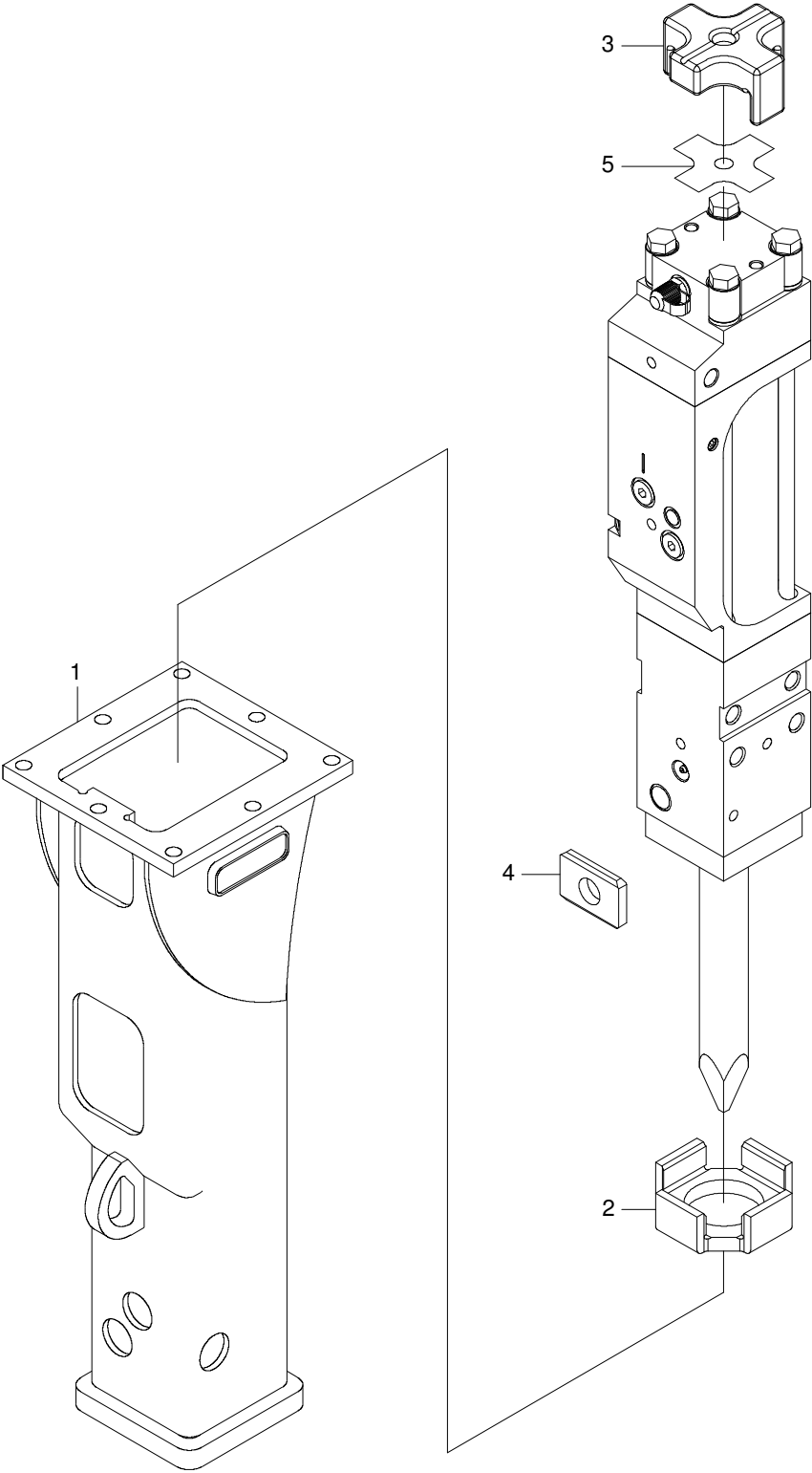
TYPE OF TOOL	Moil Point (Conical)	Flat End (Blunt)	Flat Wedge -Horizontal (Cross-cut)	Flat Wedge - Vertical (Inline-cut)	Moil Wedge (Pyramid)	Flat Wedge -Horizontal (Asphalt-cutter)
--------------	-------------------------	---------------------	--	--	-------------------------	---

PART NO.	AB008-0012	AB008-0013	AB008-0001	AB008-0011	B008-6003	AB008-0014
----------	------------	------------	------------	------------	-----------	------------

TOOL DIAMETER	mm (in.)	42 (1.65)	42 (1.65)	42 (1.65)	42 (1.65)	42 (1.65)
TOOL LENGTH	mm (in.)	427 (17)	427 (17)	427 (17)	427 (17)	390 (15)
TOOL WEIGHT	kg (lbs)	4.1 (9)	4.5 (10)	4.2 (9)	4.2 (9)	7 (15)

**EHB008 – Bracket Ass’y; BA**

---

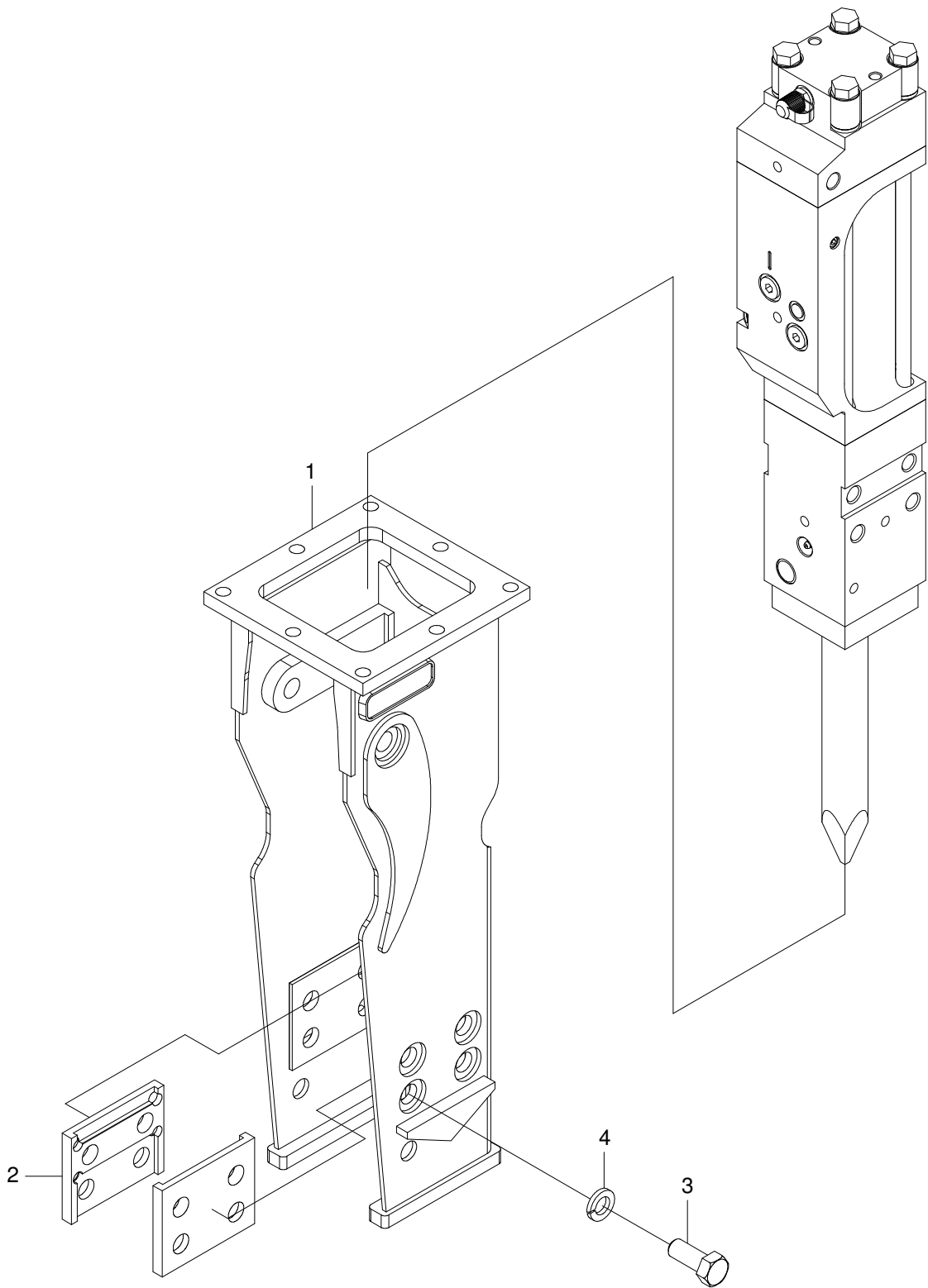


## EHB008 – Bracket Ass'y; BA

ITEM	PART NO.	PART NAME	QTY	S/N	REMARKS
+	B008-9402	Bracket Ass'y	1		
1	B008-7031	Bracket	1		
2	B008-7029	Lower Damper	1		
3	B008-7012	Upper Damper	1		
4	B008-7010	Wear Plate	1		
5	AB008-0035	Shim	AR		

**EHB008 – Bracket Ass’y; NA**

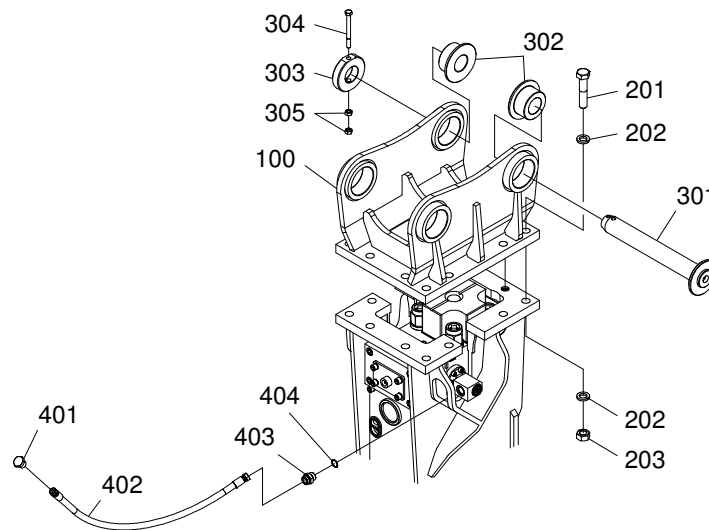
---



## EHB008 – Bracket Ass'y; NA

ITEM	PART NO.	PART NAME	QTY	S/N	REMARKS
+	AB008-0036	Bracket Ass'y	1		
1	AB008-0037	Bracket	1		
2	AB008-0038	Locate Block	2		
3	S0124561	Hex. Bolt	10		
4	S5101011	Spring Washer	10		

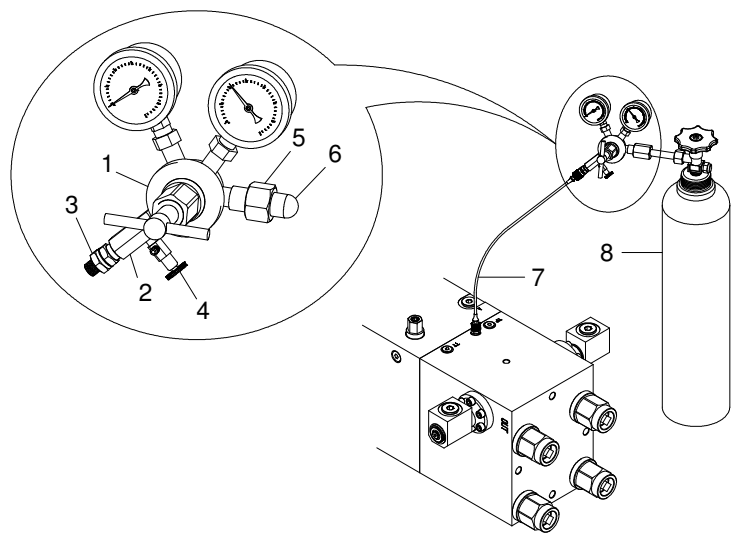
## EHB008 – Mounting Adapter and Hoses



ITEM	PART NO.	PART NAME	QTY	S/N	REMARKS
100	B008-7014	Mounting Adapter	1		
200	B030-0616	Adapter Fasteners Set	1		
201	S0360963	-Hex. Head Bolt	-10		M12x1.25x L50-10.9T
202	S5100713	-Spring Washer	-20		M12(Type 1)
203	S4032743	-Hex. Nut	-10		M12x1.25x10T
300	B010-9950Do	Mounting Pin Set	2		
301	B010-9951D0	-Bracket Pin	-1		
302	B010-9953Do	-Spacer	-2		
303	B010-9962Do	-Stop ring	-1		
304	S0156561	-Hex. Head Bolt	-1		M8x1.25XL60-10.9T
305	S4012532	-Hex. Nut	-2		M8X1.25-8T
400	B010-0614	Hose Set	2		
401	A061-0027D002	-Hose Plug	-1		BSP3/8(30°FLR)
402	H001-0016D005	-Hose	-1		BSP3/8(30°FLR)-L1250-P280
403	H002-0012D010	-Adapter	-1		BSP3/8-BSP3/8(30°FLR)
404	S8000141	-O-ring	-1		JIS P14-HsA90



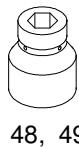
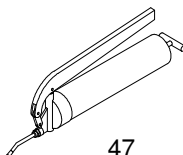
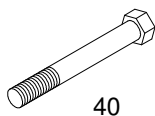
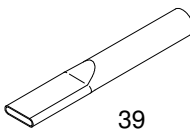
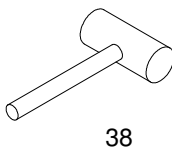
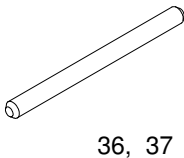
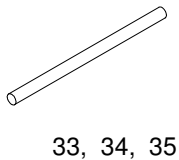
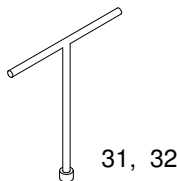
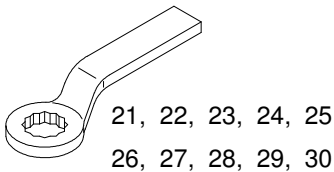
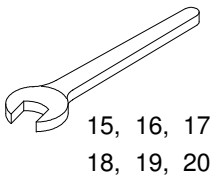
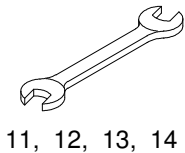
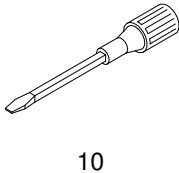
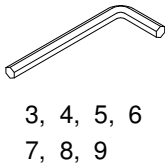
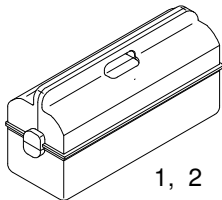
**EHB008 – Gas Charging Kit**



ITEM	PART NO.	PART NAME	QTY	S/N	REMARKS
+	A090-0052	Gas Charging Kit	1		Excl. item 9
1	A092-0005	Pressure Regulator	1		KS B4603
2	A062-0043	Adapter	1		
3	A062-0041	Minimess Coupling	1		BSP 1/4
4	A082-0016	Exhaust Valve	1		BSPT 1/8
5	A012-0002	Cap Nut	1		KS B6214, W23-14
6	A062-0018	Coupling	1		KS B6214
7	A075-0028	Hose	1		S12, 65x1.5-L1000(5800PSI)
8	A090-0021	Nitrogen Gas Bottle	1		[S]

**EHB008 – Maintenance Tool Kit**

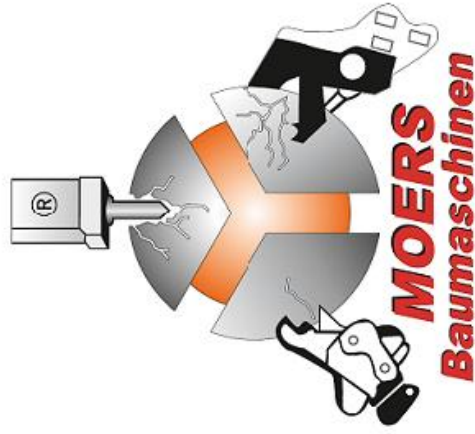
---



## EHB008 – Maintenance Tool Kit

ITEM	PART NO.	PART NAME	Standard Tool Kit		Option Tool Kit	
			BA	NA	BA	NA
	AB008-0016A	Tool Kit	✓			
	AB008-0017A	Tool Kit			✓	
	AB008-0018A	Tool Kit		✓		
	AB008-0019A	Tool Kit				✓
1	2199-9005	Tool Box(Medium)	1	1	1	1
3	T6550006	L-Wrench 5			1	1
5	T6550009	L-Wrench 8			1	1
6	T6510011	L-Wrench 10			1	1
12	T6510075	Spanner 19x22	1	1	1	1
13	T6510081	Spanner 24x27		1	1	1
15	T6510022	Spanner 30	1	1	1	1
31	T6640005	T-Wrench 10			1	1
33	AA090-0003	Spring Pin Tool 10	1	1	1	1
38	T7260057	Hammer	1	1	1	1
39	2199-1005	Pipe			1	1
41	S3140031	Eye Bolt M12			2	2
47	2199-9008	Grease Gun	1	1	1	1

ISO9001 ISO14001



# MOERS

Spezialgeräte für Abbruch und Recycling  
Spezialbereich Hydraulik - Hämmer



# Baumaschinen

Moers Baumaschinen GmbH & Co. KG - Färberstr. 4 - 58119 Hagen - Tel.: 02334 / 90 66 - 0 Fax 02334 / 90 66 - 26

[info@moers-baumaschinen.de](mailto:info@moers-baumaschinen.de)  
[www.moers-baumaschinen.de](http://www.moers-baumaschinen.de)