

MOERS

Spezialgeräte für Abbruch und Recycling
Spezialbereich Hydraulik - Hämmer

Baumaschinen



Telefon: +49 (0)2334 / 9066-0 ■ Fax: +49 (0)2334 / 9066-26 ■ Färberstr. 4 ■ 58119 Hagen - Hohenlimburg

Ersatzteilliste

Betonknacker / Pulverisierer EHP 42



Hagen

INSTRUCTIONS FOR USE

- This parts manual describes the configuration of the part components of the product and is intended only to assist to order spare parts for maintenance work
- This manual contains no safety information for operating the product or maintenance work. Please observe the safety instructions described in the relevant operation manual.
- The illustrations shown in this manual is not appropriate for workshop instructions, so they should not be used for assembling or disassembling the product. Please refer to the workshop manual for that purpose.
- Use Everdigm genuine parts only.
Warranties do not cover damages that have been caused or aggravated by use of non-genuine parts.
- For product warranty, please refer to the warranty conditions provided separately.
- The illustrations in this manual show only the overall shapes and positions of the part components so they may not be identical with the actual parts.
- For the purpose of continued product improvement, some information in this manual could be changed without prior notice, and might be differ from your product which was not covered by this publication.
- If you found the information that is unclear or not corresponding with the actual product, contact Everdigm or Everdigm distributor.

How to use this parts manual:

<Example>

RX-20 – CYLINDER UNIT

3	1	4	2	5	6	7	8
ITEM	PART NO.	PART NAME	QTY	S/N	REMARKS		
+	X123-9001	Cylinder Unit	2				
1	X123-1001	Cylinder Housing	1				
2	X123-9002	Rod Cover Ass'y	1				
3	X123-1002	-Rod Cover	-1	~199	[R X123-1002A]		
	X123-1002A	-Rod Cover	-1	200~			
4	A456-2001	-Slide Seal	-2		[K1]		
4-1	A456-2002	--Seal Ring	--1		[K1] [D]		
4-2	A456-2003	--O-Ring	--1		[K1] [D]		
5	A456-2004	-Dust Wiper	-1		[K1]		
6	X123-1003	Rod	1				
7	X124-1005	Piston	1				
•	•	•					
•	•	•					
•	•	•					

1. Model name: Identification name of the product

2. Title: Title name of the assembly shown in the page

-
3. Item: Key number which shows the referring number of the part in corresponding illustration.
For a revised part which replaces the old one with same item number, the item is not shown.
Item numbers are not always in sequence.
+..... Represent the title assembly containing the entire part in the illustration.
* with the same item number..... Represent selectable parts depending on product version.
4. Part No.: Identification number of the part or assembly.
The part number might be omitted when the part cannot be supplied separately.
5. Part Name: Part name of the part.
The parts without a prefix in front of the part name are independent component parts or subassemblies belong to the title assembly in corresponding list.
Prefix '- '..... The parts marked with the prefix '- ' in front of the part name are component parts belong to the subassembly shown above of the rows of these parts.
Prefix '-- '... The parts marked with the prefix '-- ' are component parts of the '- ' marked subassembly containing these parts.
6. Qty: Quantity used for one unit of their parent assembly containing the parts.
When the quantity of the title assembly is blank, refer to the page shown with '►', but when it is not blank, it represents the quantity used for one unit of the product.
For the parts with the prefix '- ' or '-- ' in front of their part name, the quantity is expressed with that prefix.
AR... As many as required (variable quantity depending on the product)
7. S/N: Serial number of the product which those parts are applied
Parts without serial no. indications are used in every product regardless of serial number.
8. Remarks: Supplementary comment. Refer to the following for the code within [].
A..... The parts with this code can be used interchangeably with each other.
R..... The part with this code is no longer manufactured as a result of a revision and replaced by the new part whose part number follows this code.
K..... The part with this code is contained in the service kit whose item number follows this code.
D..... The part with this code cannot be supplied separately. The assembly part containing this part should be ordered.
S..... Non-standard part which can be supplied by separate order

How to order parts:

Please note the full model name and serial number of your product. This code can be found on the nameplate of your product. Compare the parts to order with the corresponding parts in the drawings in this parts manual and note the part numbers to order.

When ordering parts, please specify detail part names as shown in the following example,

- Model name of product: RX-20
- Serial number: 135
- Part No.: A123-4567
- Part name: Pin
- Quantity: 2
- Purchaser's name & address:

TABLE OF CONTENTS

INSTRUCTIONS FOR USE 2

Pulverizer Ass'y..... 6

Main Ass'y..... 7

Speed-up Valve..... 11

Cylinder Ass'y 13

Parts for Mounting..... 15

Seal Kit..... 17

Shims..... 18

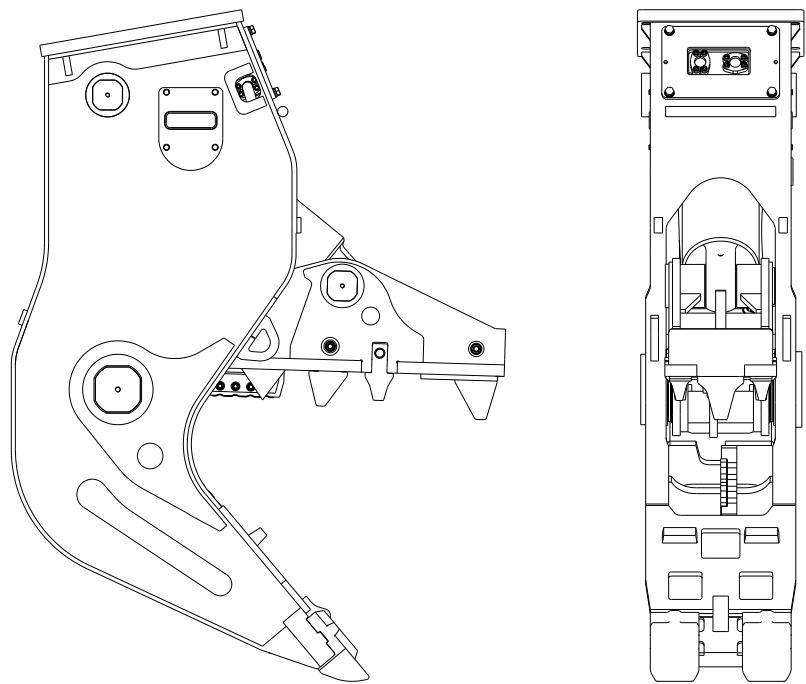
Maintenance Tool Kit..... 19

Notes 21

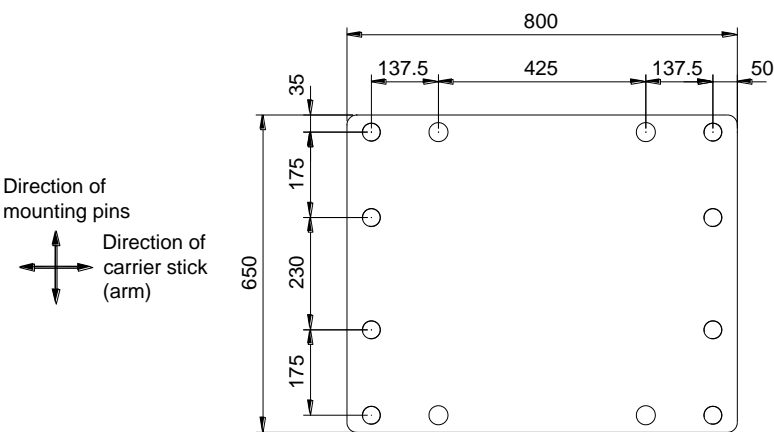
BLANK PAGE

EHP42 – Pulverizer Ass'y

Pulverizer Ass'y



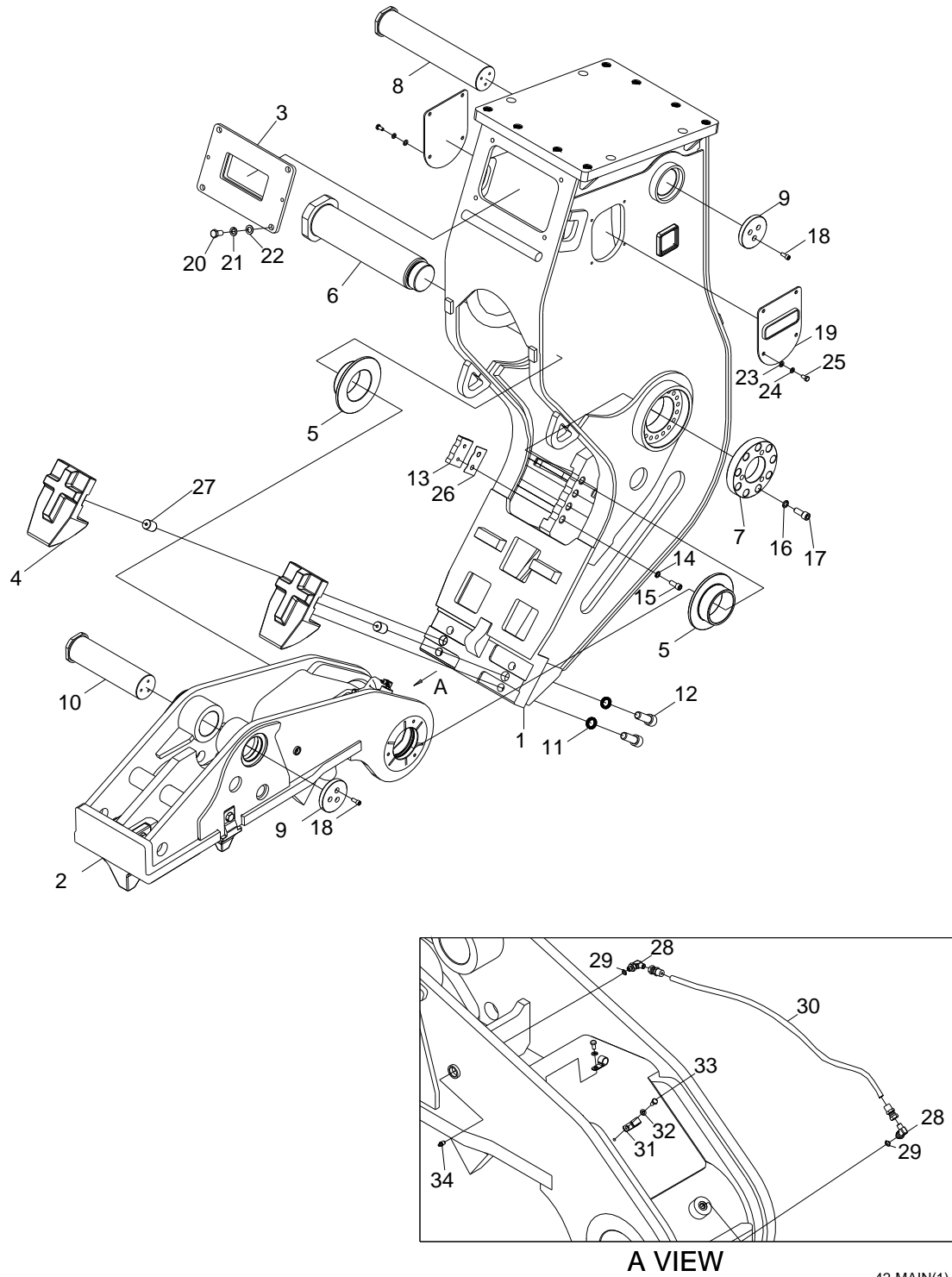
Mounting Dimensions



Unit: mm

42-PVAS-01E-01

EHP42 – Main Ass'y (1/2)

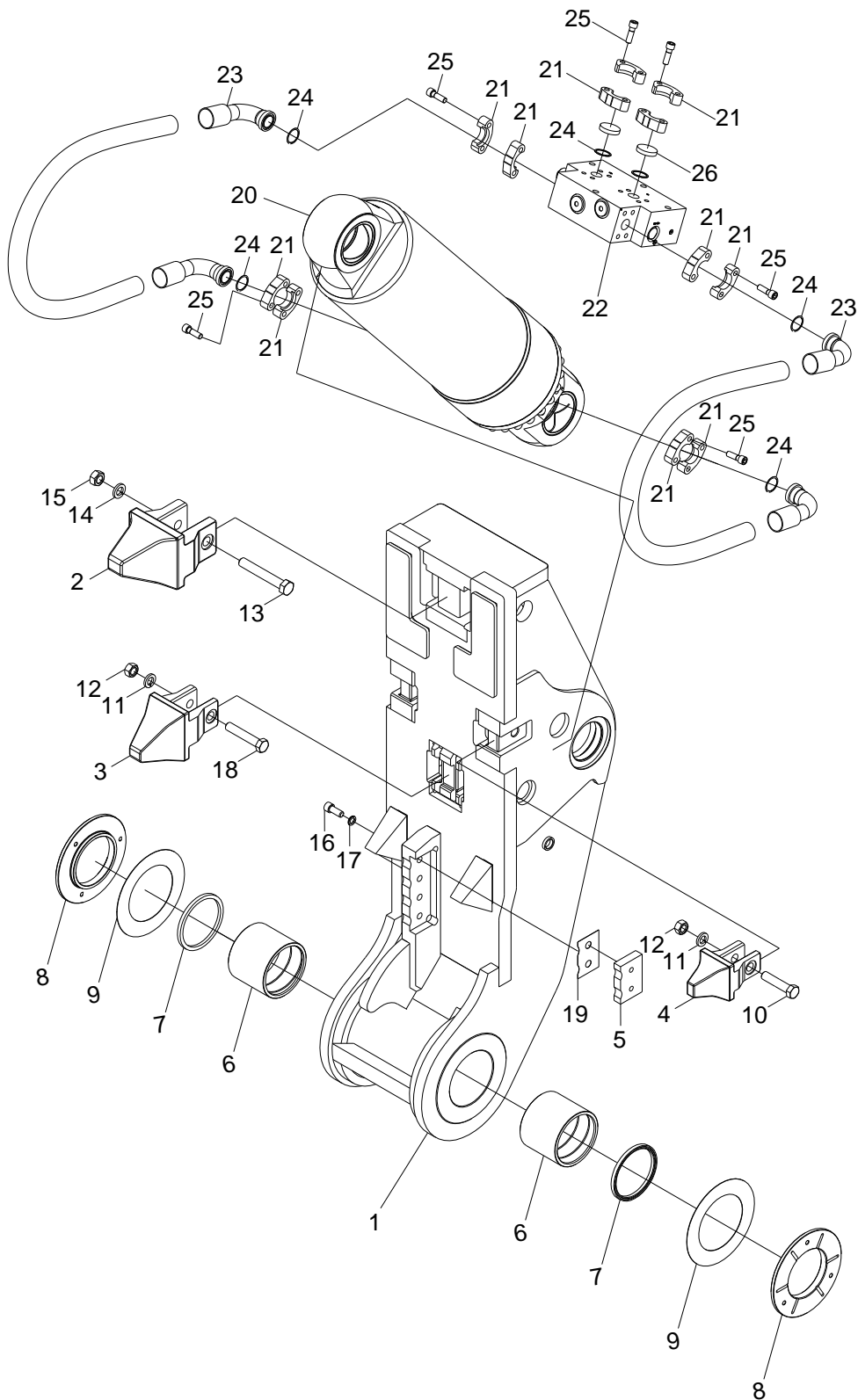


42-MAIN(1)-02

EHP42 – Main Ass'y (1/2)

ITEM	PART NO.	PART NAME	QTY	S / N	REMARKS
+	AP420-0001	MAIN ASS'Y	1		[R AP420-0001A]
+	AP420-0001A	MAIN ASS'Y	1		
1	AP420-0002	BODY	1		[R AP420-0002A]
	AP420-0002A	BODY	1		
2	AP420-0054	JAW ASS'Y	1		
3	AP420-0050	COVER ASSY	1		
4	AP420-0093	TOOTH	2		[R AP420-0107]
	AP420-0107	TOOTH	2		
5	AP420-0098	BUSH	2		
6	AP420-0099	PIN	1		
7	AP420-0100	COVER	1		
8	AP420-0101	PIN	1		
9	P202-5020	PIN COVER	2		
10	AP420-0102	PIN	1		
11	A015-0003D30	DISK LOCK WASHER	8		
12	S2239871	SOCKET BOLT	8		
13	C300-4602	CUTTER BLADE	2		
14	A015-0003D016	DISK LOCK WASHER	4		
15	S2221471	SOCKET BOLT	4		
16	S5111112	SPRING WASHER	9		
17	S2227671	SOCKET BOLT	9		
18	S2215261	SOCKET BOLT	6		
19	AC204-0085	COVER ASS'Y	1		
20	S0127461	HEX BOLT	4		
21	S5101111	SPRING WASHER	4		
22	S5011113	PLAIN WASHER	4		
23	S5010713	PLAIN WASHER	8		
24	S5100711	SPRING WASHER	8		
25	S0115063	HEX BOLT	8		
26	C300-4711D0	SHIM	AR		
27	P202-5043	LOCK PIN	2		
28	H002-0014D001	ELBOW	2		
29	S8000111	O-RING	2		[K1]
30	H001-0016D058	HOSE	1		
31	2124-1509D002	CLIP	2		
32	S5100513	SPRING WASHER	2		
33	S0108663	HEX BOLT	2		
34	S6710041	GREASE NIPPLE	1		

EHP42 – Main Ass'y (2/2)

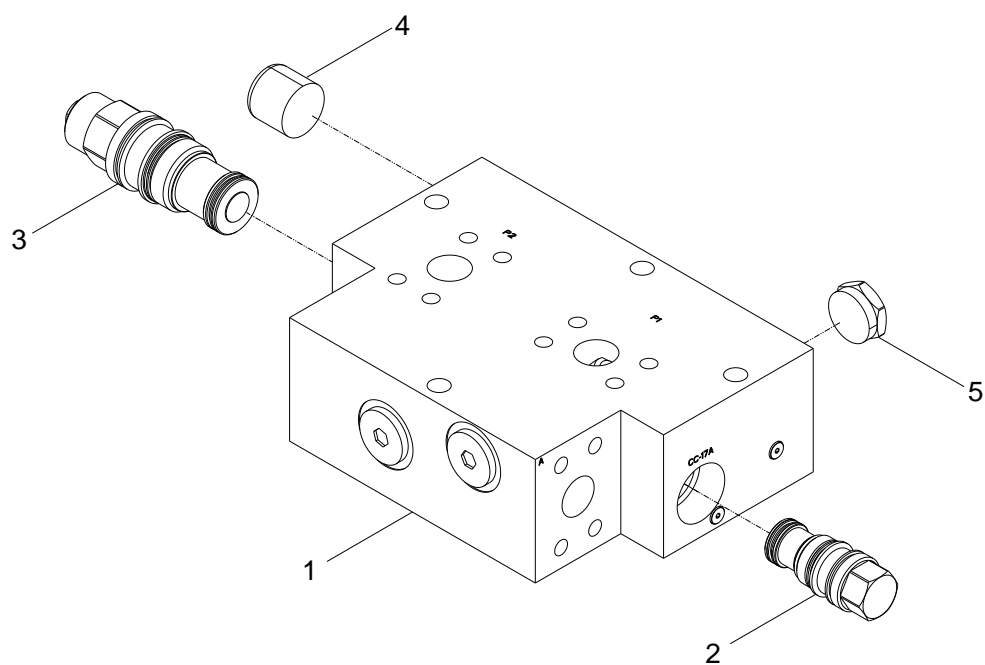


42-MAIN(2)-02

EHP42 – Main Ass'y (2/2)

ITEM	PART NO.	PART NAME	QTY	S / N	REMARKS
+	AP420-0001	MAIN ASS'Y	1		[R AP420-0001A]
+	AP420-0001A	MAIN ASS'Y	1		
1	AP420-0053	JAW	1		
2	AC400-0234	TOOTH	1		
3	P202-4011B	TOOTH	1		
4	P202-4009B	TOOTH	2		
5	C300-4602	CUTTER BLADE	2		
6	AP420-0087	BUSH	2		
7	AA054-0023	DUST SEAL	2		[K1]
8	AP420-0088	WEAR-RING	2		
9	AP420-0089	SHIM	AR		
10	S0173161	HEX BOLT	2		
11	S5101211	SPRING WASHER	3		
12	S4013241	HEX NUT	3		
13	S0176263	HEX BOLT	1		
14	S5101313	SPRING WASHER	1		
15	S4013341	HEX NUT	1		
16	S2221471	SOCKET BOLT	4		
17	A015-0003D016	DISK LOCK WASHER	4		
18	S0173571	HEX BOLT	1		
19	C300-4711Do	SHIM	AR		
20	AP420-0043	CYLINDER ASS'Y	1		
21	2181-9086	SPLIT FLANGE	12		
22	AP420-0094	SPEED UP VALVE	1		
23	H001-0030D054	HOSE	2		
24	A051-2222	O-RING	6		[K1]
25	S2218561	SOCKET BOLT	24		
26	A081-0021	FLANGE CAP	2		

EHP42 – Speed-up Valve

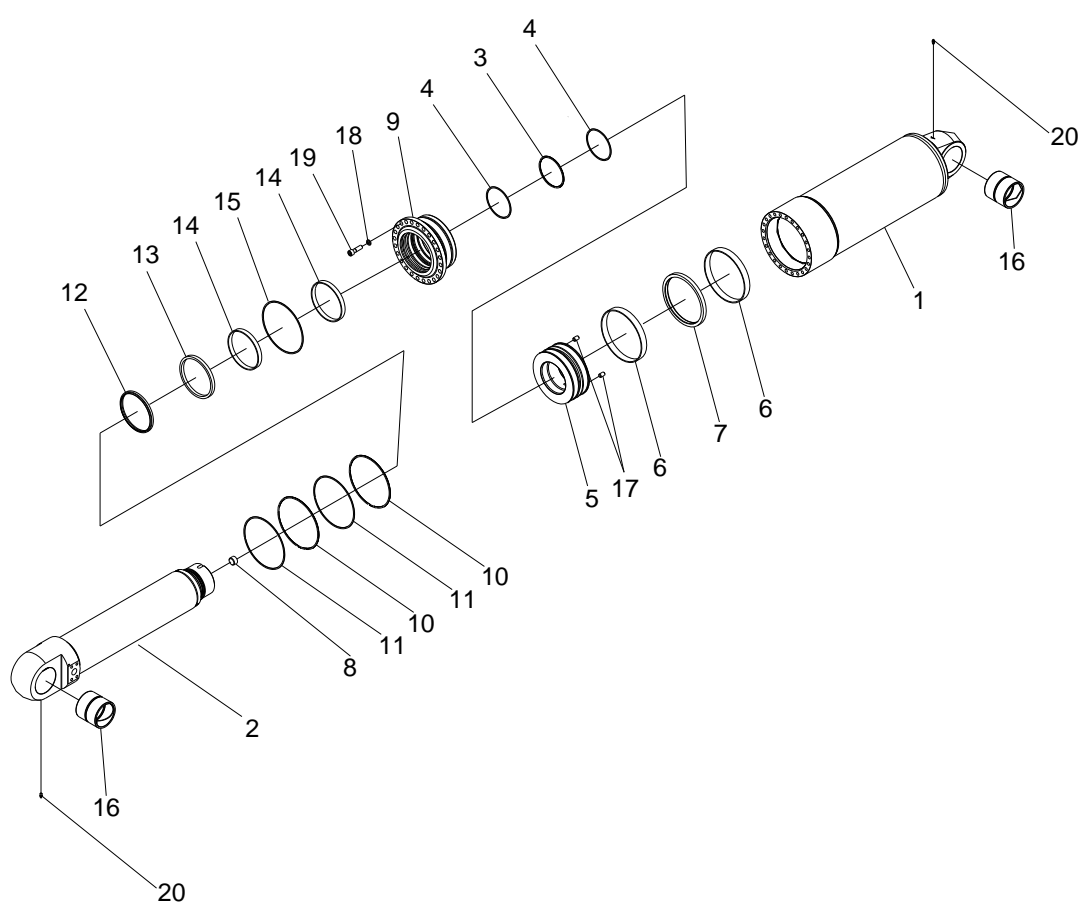


42-SPVV_01

EHP42 – Speed-up Valve

ITEM	PART NO.	PART NAME	QTY	S / N	REMARKS
+	AP420-0094	SPEED UP VALVE	1		
1	AX000-1960	VALVE BLOCK	1		
2	AC430-0080	PILOT CHECK VALVE	1		
3	AC430-0079	COUNTER BALANCE VALVE	1		
4	AX000-1747	CAVITY PLUG	1		
5	AX000-1746	CHECK VALVE	1		

EHP42 – Cylinder Ass'y



45R-CYLA-1_01

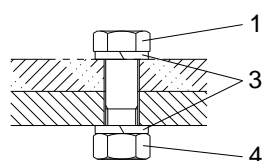
EHP42 – Cylinder Ass'y

ITEM	PART NO.	PART NAME	QTY	S / N	REMARKS
+	AP420-0043	CYLINDER ASS'Y	1		
1	AP420-0044	TUBE ASS'Y	1		
2	AP420-0047	ROD	1		
3	S8001401	O-RING	1		[K2]
4	S8061400	BACK UP-RING	2		[K2]
5	C300-3104A	PISTON	1		
6	A059-0006	WEAR-RING	2		[K2]
7	A056-0026	PISTON SEAL	1		[K2]
8	S5810060	PLUG	1		
9	AP420-0048	ROD BUSH	1		
10	S8012401	O-RING	2		[K2]
11	S8092400	BACK UP-RING	2		[K2]
12	A054-0017	WIPER	1		[K2]
13	A053-0102	U-RING	1		[K2]
14	A059-2017	WEAR-RING	2		[K2]
15	A056-0078	STEP SEAL	1		[K2]
16	AP420-0049	BUSH	2		
17	S3527707	SET SCREW	2		
18	S5110911	SPRING WASHER	24		
19	S2221771	SOCKET BOLT	24		
20	S6710042	GREASE NIPPLE(A Type)	2		

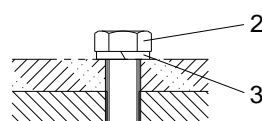
EHP42 – Parts for Mounting

Fasteners Set for Mounting Adapter

For $\phi 39$ mm holes

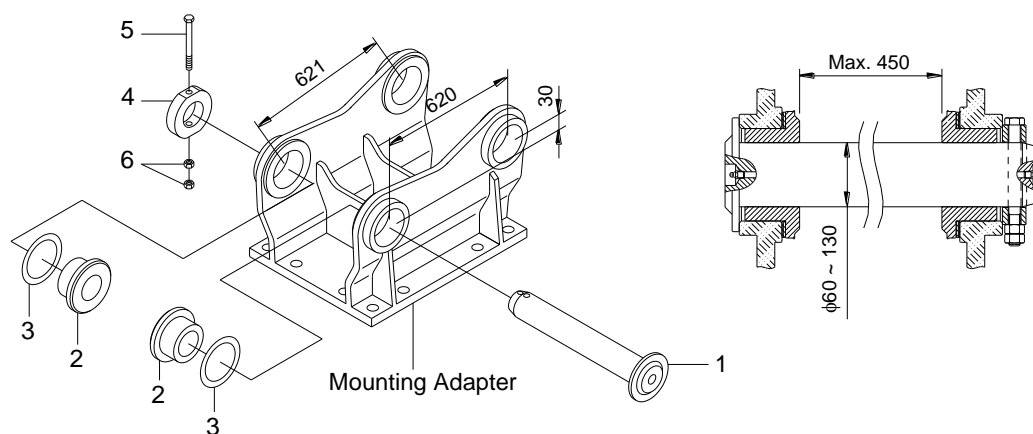


For M36x4 threaded holes



Standard Mounting Adapter & Mounting Pin Set

Unit: mm



45T-PFMT-1-E

EHP42 – Parts for Mounting

ITEM	PART NO.	PART NAME	QTY	S / N	REMARKS
------	----------	-----------	-----	-------	---------

Fasteners Set for Mounting Adapter

	AC450-0040	ADAPTER FASTENERS SET	1		
1	S0184063	HEX BOLT	8		M36x4xL160-10.9
2	S0145463	HEX BOLT	4		M36x4xL110-10.9
3	S5101713	SPRING WASHER	20		M36(TYPE 1)
4	S4013743	HEX NUT	8		M30x4-10

Standard Mounting Adapter

	B500-7072C	MOUNTING ADAPTER	1		
--	------------	------------------	---	--	--

Mounting Pin Set

	B280-9950Do	MOUNTING PIN SET	2		2 sets / unit
1	B280-9952Do	BRACKET PIN	1		
2	B280-9957Do	SPACER	2		
3	B280-9956Do	SHIM	AR		
4	B280-9955Do	STOP RING	1		
5	S0167261	HEX BOLT	1		M16x2xL170-10.9
6	S4012942	HEX NUT	2		M16x2-10-Style2

Notes

The parts with 'Do' at the end of their parts numbers are should be selected properly according to your carrier.
Please contact Everdigm or our distributor before ordering parts of the mounting pin set.

Hoses for Adapter-Mount Type

1	H001-0015D009	HOSE	2		FH1-1/4-ORFS20-P350-L2000
1	H001-0015D001	HOSE	2		FH1-1/4-ORFS20-P350-L2300
2	A051-0252	O-RING	2		AS568-025-HsA90
3	A051-2222	O-RING	2		AS568-222-HsA90 (for Flange)
4	H002-0004D001	CAP	2		ORFS20
5	A061-0026D4	HOSE PLUG	1		ORFS20

Notes

When ordering hoses, check the type of hose connection of carrier and proper length of hoses before choosing the hoses.
Special hoses with other connection types or other hose lengths are also available on request.

EHP42 – Seal Kit

ITEM	PART NO.	PART NAME	QTY	S / N	REMARKS
K1	AC420-0084	SEAL KIT (MAIN ASS'Y)	1		Seal Kit for Main Ass'y
1	S8000111	-O-RING	-2		
2	AA054-0023	-DUST SEAL	-2		
3	A051-2222	-O-RING	-6		
K2	AC450-0111	SEAL KIT (CYLINDER)	1		Seal Kit for Cylinder
1	S8001401	-O-RING	-1		
2	S8061400	-BACK UP-RING	-2		
3	A059-0006	-WEAR-RING	-2		
4	A056-0026	-PISTON SEAL	-1		
5	S8012401	-O-RING	-2		
6	S8092400	-BACK UP-RING	-2		
7	A054-0017	-WIPER	-1		
8	A053-0102	-U-RING	-1		
9	A059-2017	-WEAR-RING	-2		
10	A056-0078	-STEP SEAL	-1		

EHP42– Shims

ITEM	PART NO.	PART NAME	QTY	S / N	REMARKS
------	----------	-----------	-----	-------	---------

Shims for Jaw

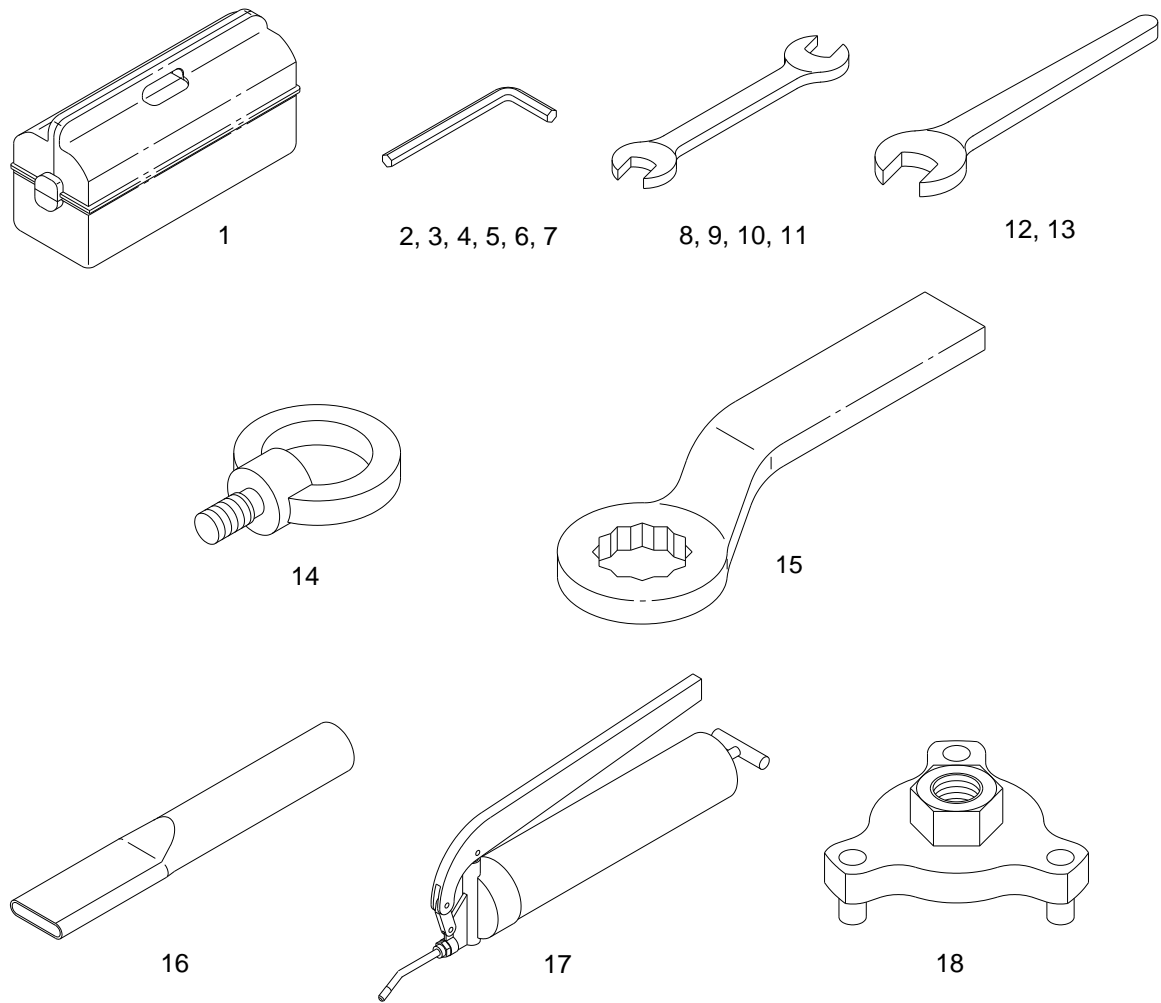
	AP420-0089D001	SHIM (0.3)			Thickness: 0.3 mm
	AP420-0089D002	SHIM (0.5)			Thickness: 0.5 mm
	AP420-0089D003	SHIM (1.0)			Thickness: 1.0 mm
	AP420-0089D004	SHIM (0.2)			Thickness: 0.2 mm

Shims for Cutter Blades

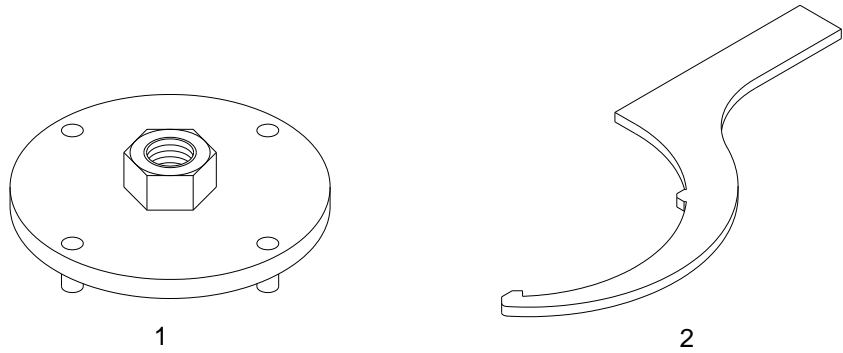
+	C300-4711	SHIM			
Do	001	SHIM (0.1)			Thickness: 0.1 mm
	002	SHIM (0.2)			Thickness: 0.2 mm
	003	SHIM (0.3)			Thickness: 0.3 mm
	004	SHIM (0.5)			Thickness: 0.5 mm
	005	SHIM (1.0)			Thickness: 1.0 mm

EHP42– Maintenance Tool Kit

Standard Tools



Option Tools



42-TOOL-2

EHP42– Maintenance Tool Kit

ITEM	PART NO.	PART NAME	QTY	S / N	REMARKS
------	----------	-----------	-----	-------	---------

Standard Tool Kit

+	AC420-0085	EHP42 TOOL KIT	1		
1	2199-9004	TOOL BOX	1		
2	T6550007	L-WRENCH 6	1		
3	T6550011	L-WRENCH 10	1		
4	T6550013	L-WRENCH 12	1		
5	T6550015	L-WRENCH 14	1		
6	T6550018	L-WRENCH 17	1		
7	T6550022	L-WRENCH 22	1		
8	T6510071	SPANNER 14x17	1		
9	T6510075	SPANNER 19x22	1		
10	T6510081	SPANNER 24x27	2		
11	T6510087	SPANNER 30x32	2		
12	T6510025	SPANNER 36	2		
13	T6510028	SPANNER 46	1		
15	A090-0031	RING WRENCH 55	1		
16	2199-1005	PIPE	1		
17	2199-9008	GREASE GUN	1		
18	C200-8002A	ADJUST NUT JIG (PCD155)	1		

Option Tools

1	A090-0034D003	PISTON JIG	AR		for cylinder maintenance
2	A090-0033D004	HOOK WRENCH	AR		for cylinder maintenance



MOERS

Spezialgeräte für Abbruch und Recycling
Spezialbereich Hydraulik - Hämmer

Baumaschinen



Moers Baumaschinen GmbH & Co. KG - Färberstr. 4 - 58119 Hagen - Tel.: 02334 / 90 66 - 0 Fax 02334 / 90 66 - 26

info@moers-baumaschinen.de
www.moers-baumaschinen.de