

MOERS

Spezialgeräte für Abbruch und Recycling
Spezialbereich Hydraulik - Hämmer

Baumaschinen



Telefon: +49 (0)2334 / 9066-0 ■ Fax: +49 (0)2334 / 9066-26 ■ Färberstr. 4 ■ 58119 Hagen - Hohenlimburg

Ersatzteilliste

Betonknacker / Pulverisierer EHP 32 A



Hagen

INSTRUCTIONS FOR USE

- This parts manual describes the configuration of the part components of the product and is intended only to assist to order spare parts for maintenance work
- This manual contains no safety information for operating the product or maintenance work. Please observe the safety instructions described in the relevant operation manual.
- The illustrations shown in this manual is not appropriate for workshop instructions, so they should not be used for assembling or disassembling the product. Please refer to the workshop manual for that purpose.
- Use Everdigm genuine parts only.
Warranties do not cover damages that have been caused or aggravated by use of non-genuine parts.
- For product warranty, please refer to the warranty conditions provided separately.
- The illustrations in this manual show only the overall shapes and positions of the part components so they may not be identical with the actual parts.
- For the purpose of continued product improvement, some information in this manual could be changed without prior notice, and might be differ from your product which was not covered by this publication.
- If you found the information that is unclear or not corresponding with the actual product, contact Everdigm or Everdigm distributor.

How to use this parts manual:

<Example>

RX-20 – CYLINDER UNIT

3	1	4	2	5	6	7	8
ITEM	PART NO.	PART NAME	QTY	S/N	REMARKS		
+	X123-9001	Cylinder Unit	2				
1	X123-1001	Cylinder Housing	1				
2	X123-9002	Rod Cover Ass'y	1				
3	X123-1002	-Rod Cover	-1	~199	[R X123-1002A]		
	X123-1002A	-Rod Cover	-1	200~			
4	A456-2001	-Slide Seal	-2		[K1]		
4-1	A456-2002	--Seal Ring	--1		[K1] [D]		
4-2	A456-2003	--O-Ring	--1		[K1] [D]		
5	A456-2004	-Dust Wiper	-1		[K1]		
6	X123-1003	Rod	1				
7	X124-1005	Piston	1				
•	•	•					
•	•	•					
•	•	•					

1. Model name: Identification name of the product

2. Title: Title name of the assembly shown in the page

-
3. Item: Key number which shows the referring number of the part in corresponding illustration.
For a revised part which replaces the old one with same item number, the item is not shown.
Item numbers are not always in sequence.
+..... Represent the title assembly containing the entire part in the illustration.
* with the same item number..... Represent selectable parts depending on product version.
4. Part No.: Identification number of the part or assembly.
The part number might be omitted when the part cannot be supplied separately.
5. Part Name: Part name of the part.
The parts without a prefix in front of the part name are independent component parts or subassemblies belong to the title assembly in corresponding list.
Prefix '- '..... The parts marked with the prefix '- ' in front of the part name are component parts belong to the subassembly shown above of the rows of these parts.
Prefix '-- '... The parts marked with the prefix '-- ' are component parts of the '- ' marked subassembly containing these parts.
6. Qty: Quantity used for one unit of their parent assembly containing the parts.
When the quantity of the title assembly is blank, refer to the page shown with '►', but when it is not blank, it represents the quantity used for one unit of the product.
For the parts with the prefix '- ' or '-- ' in front of their part name, the quantity is expressed with that prefix.
AR... As many as required (variable quantity depending on the product)
7. S/N: Serial number of the product which those parts are applied
Parts without serial no. indications are used in every product regardless of serial number.
8. Remarks: Supplementary comment. Refer to the following for the code within [].
A..... The parts with this code can be used interchangeably with each other.
R..... The part with this code is no longer manufactured as a result of a revision and replaced by the new part whose part number follows this code.
K..... The part with this code is contained in the service kit whose item number follows this code.
D..... The part with this code cannot be supplied separately. The assembly part containing this part should be ordered.
S..... Non-standard part which can be supplied by separate order

How to order parts:

Please note the full model name and serial number of your product. This code can be found on the nameplate of your product. Compare the parts to order with the corresponding parts in the drawings in this parts manual and note the part numbers to order.

When ordering parts, please specify detail part names as shown in the following example,

- Model name of product: RX-20
- Serial number: 135
- Part No.: A123-4567
- Part name: Pin
- Quantity: 2
- Purchaser's name & address:

TABLE OF CONTENTS

INSTRUCTIONS FOR USE 2

Pulverizer Ass'y 6

Main Ass'y 7

Speed-up Valve 11

Cylinder Ass'y 13

Parts for Mounting..... 15

Seal Kit..... 17

Shims 18

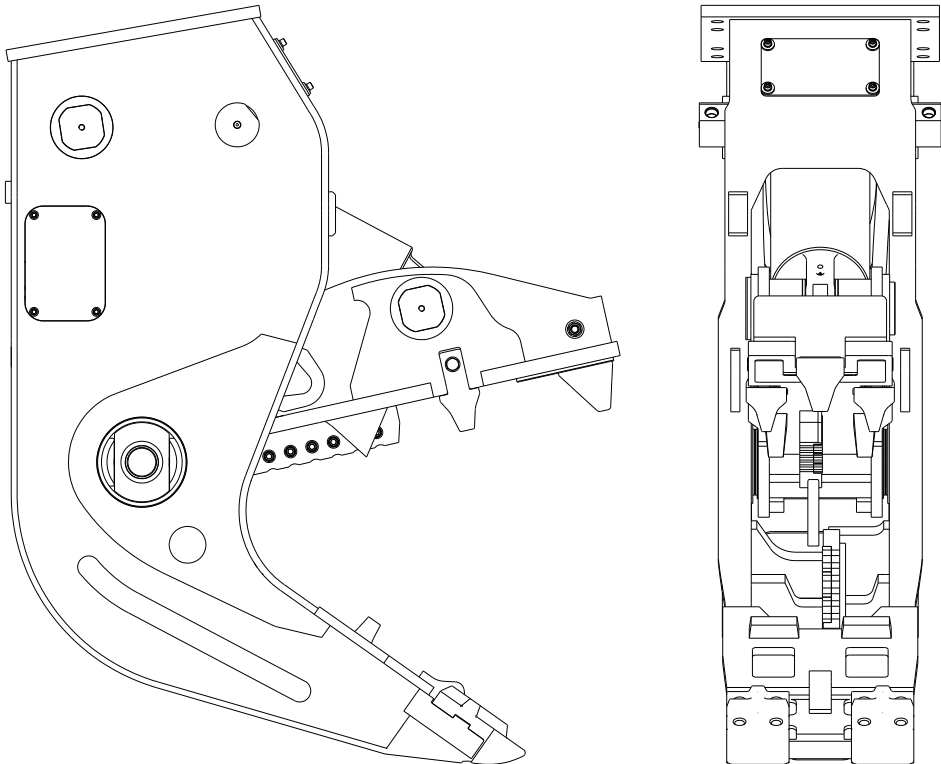
Maintenance Tool Kit..... 19

Notes 21

BLANK PAGE

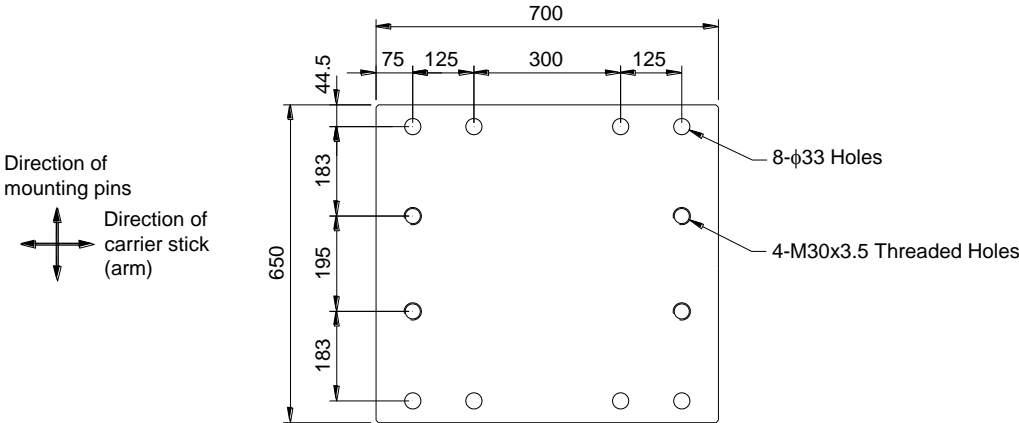
EHP32A – Pulverizer Ass'y

Pulverizer Ass'y



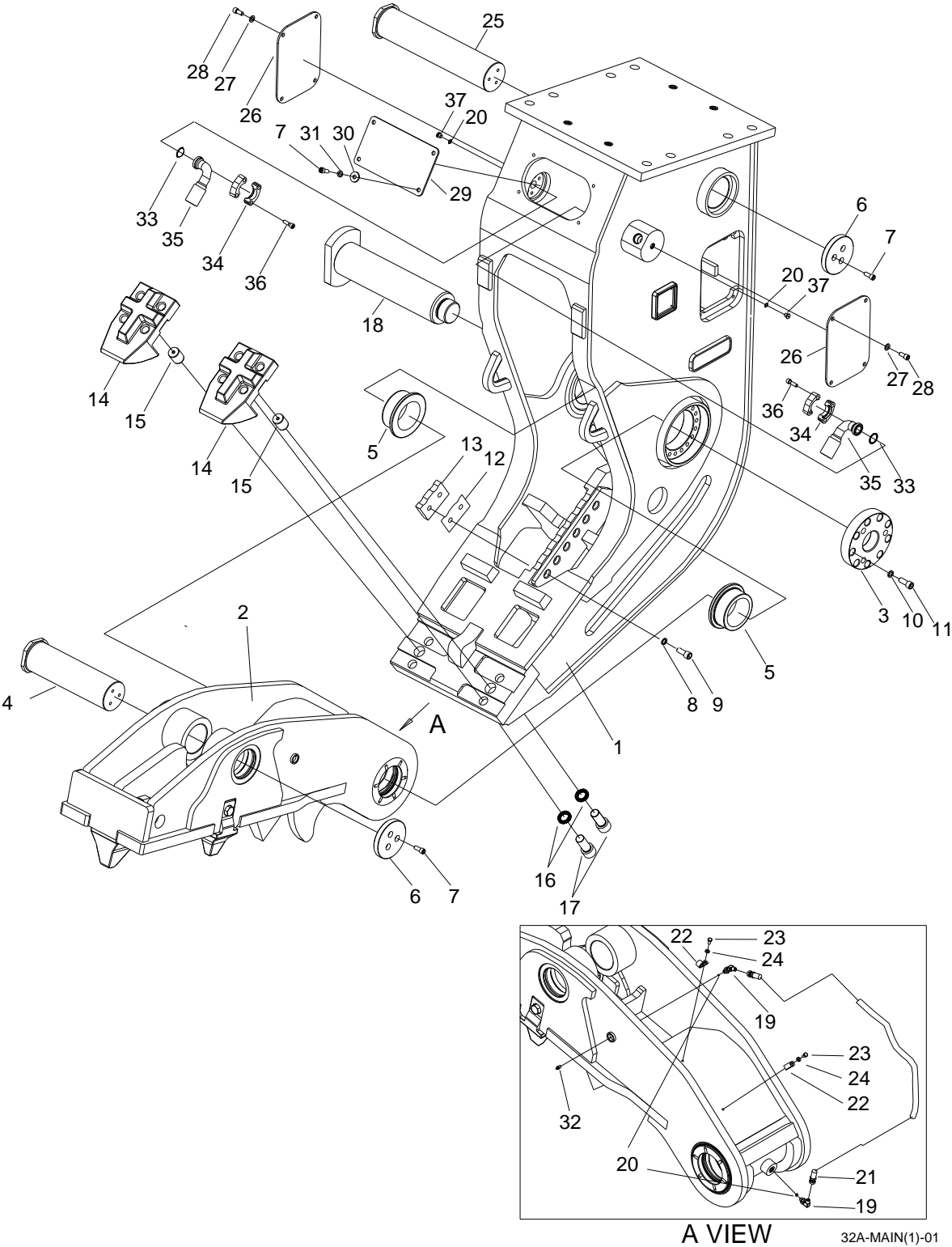
Mounting Dimensions

Unit: mm



32A-PVAS-01

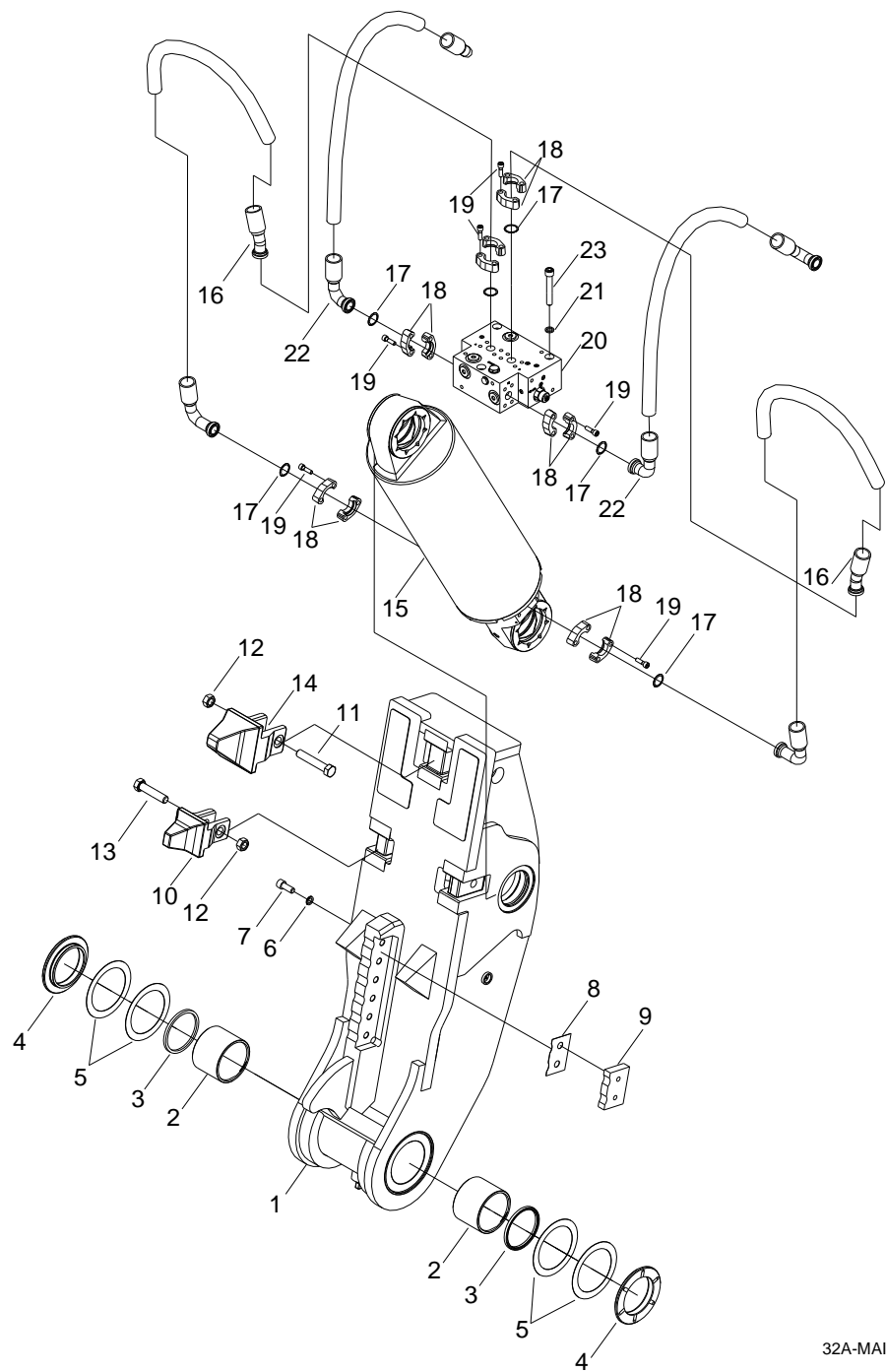
EHP32A – Main Ass’y (1/2)



EHP32A – Main Ass'y (1/2)

ITEM	PART NO.	PART NAME	QTY	S / N	REMARKS
+	AP303-0001B	MAIN ASS'Y	1		
1	AP303-0002B	BODY ASS'Y	1		
2	AP303-0022A	JAW ASS'Y	1		
3	AC302-0004A	COVER	1		
4	AP303-0035	PIN	1		
5	AP350-0049	BUSH	2		
6	P202-5020	PIN COVER	2		
7	S2215261	SOCKET BOLT	10		
8	A015-0003D016	DISK LOCK WASHER	12		
9	S2221461	SOCKET BOLT	12		
10	S5110911	SPRING WASHER	12		
11	S2221563	SOCKET BOLT	9		
12	C300-4711D0	SHIM	AR		
13	C300-4602	CUTTER BLADE	6		
14	P202-4013C	TOOTH; Front	2		
15	P202-5043	LOCK PIN	2		
16	A015-0003D30	DISK LOCK WASHER	4		
17	S2239371	SOCKET BOLT	4		
18	AC302-0001	PIN ASS'Y	1		
19	H002-0014D001	ELBOW	2		
20	S8000111	O-RING	4		[K1]
21	H001-0016D098	HOSE	1		
22	2124-1509D002	CLIP	2		
23	S0108663	HEX BOLT	2		
24	S5100513	SPRING WASHER	2		
25	AP350-0051	PIN	1		
26	P300-1003C	BLOCK COVER	2		
27	S5010713	PLAIN WASHER	8		
28	S2215061	SOCKET BOLT	8		
29	AP303-0034	COVER PLATE	1		
30	2114-1898D011	PLAIN WASHER	4		
31	S5100711	SPRING WASHER	4		
32	S6710042	GREASE NIPPLE (A Type)	1		
33	A051-2192	O-RING	8		[K1]
34	2181-9081	SPLIT FLANGE	16		
35	H001-0030D066	HOSE	2		
36	S2212361	SOCKET BOLT	32		
37	2181-1890D002	PLUG	2		

EHP32A – Main Ass’y (2/2)

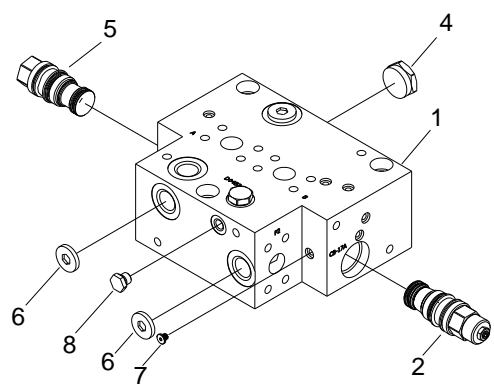


32A-MAIN(2)-01

EHP32A – Main Ass'y (2/2)

ITEM	PART NO.	PART NAME	QTY	S / N	REMARKS
+	AP303-0001B	MAIN ASS'Y	1		
1	AP303-0022A	JAW ASS'Y	1		
2	P302-5014	BUSH	2		
3	P302-3001	DUST SEAL	2		[K1]
4	P302-5015A	SPACER	2		
5	A035-0005D0	SHIM	AR		
6	A015-0003D016	DISK LOCK WASHER	12		
7	S2221461	SOCKET BOLT	12		
8	C300-4711D0	SHIM	AR		
9	C300-4602	CUTTER BLADE	6		
10	P202-4009B	TOOTH	2		
11	S0173571	HEX BOLT	1		
12	S4013241	HEX NUT	3		
13	S0173161	HEX BOLT	2		
14	P202-4011B	TOOTH	1		
15	AP350-0052B	CYLINDER ASS'Y	1		
16	H001-0031D051	HOSE	2		
17	A051-2192	O-RING	8		[K1]
18	2181-9081	SPLIT FLANGE	16		
19	S2212361	SOCKET BOLT	32		
20	AP302-0038	SPEED UP VALVE	1		
21	S5110911	SPRING WASHER	12		
22	H001-0030D066	HOSE	2		
23	S222277D	SOCKET BOLT	3		

EHP32A – Speed-up Valve

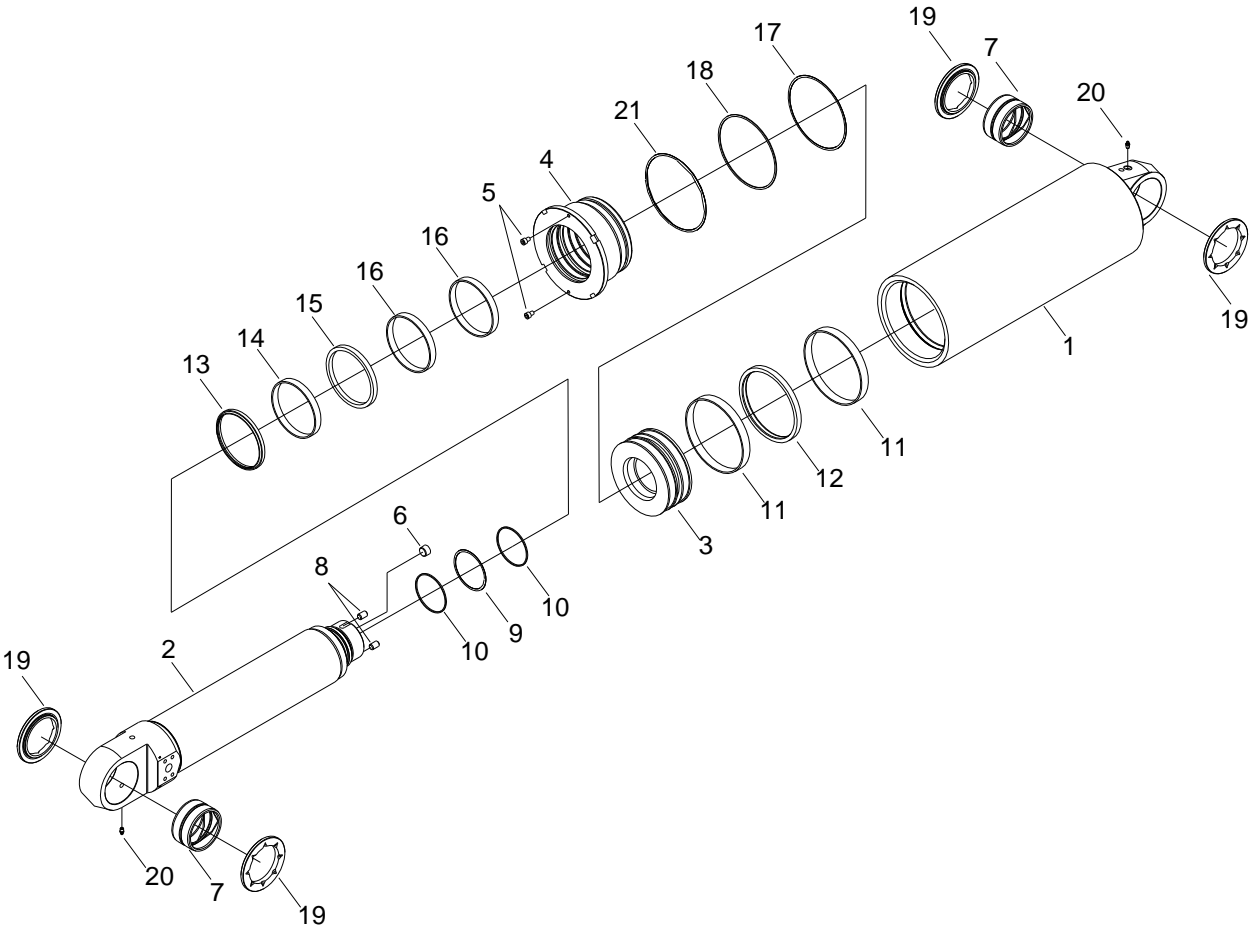


32A-SUVV-01

EHP32A – Speed-up Valve

ITEM	PART NO.	PART NAME	QTY	S / N	REMARKS
+	AP302-0038	SPEED UP VALVE	1		
1	AP302-0039	VALVE BLOCK	1		
2	AC202-0029	COUNTER BALANCE VALVE	1		
3	AX000-1747	CAVITY PLUG	1		
4	AC130-0087	CHECK VALVE	1		
5	AC430-0080	PILOT CHECK VALVE	1		
6	AC300-0216	PLUG	4		
7	AC130-0130	PLUG	4		

EHP32A – Cylinder Ass’y



32A-CYLA-01

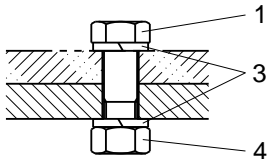
EHP32A – Cylinder Ass'y

ITEM	PART NO.	PART NAME	QTY	S / N	REMARKS
+	AP350-0052B	CYLINDER ASS'Y	1		
1	AP350-0053B	TUBE ASS'Y	1		
2	AP350-0069A	ROD	1		
3	P300-3103	PISTON	1		
4	P300-3104A	ROD COVER	1		
5	C300-3111	SCREW SEAT	2		
6	2181-1116D005	PLUG	1		
7	AP350-0056	BUSH	2		
8	S3527707	SET SCREW	2		
9	S8001101	O-RING	1		[K2]
10	S8091101	BACKUP-RING	2		[K2]
11	A059-0001	WEAR-RING	2		[K2]
12	A056-0020	PISTON SEAL	1		[K2]
13	A054-0015	WIPER	1		[K2]
14	A059-2015	WEAR-RING	1		[K2]
15	A053-0024	U-RING	1		[K2]
16	A059-0004	WEAR-RING	2		[K2]
17	S8012101	O-RING	1		[K2]
18	S8062101	BACKUP-RING	1		[K2]
19	AP350-0062	WEARING SPACER	4		
20	S6710042	GREASE NIPPLE	2		
21	S8012201	O-RING	1		[K2]

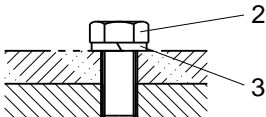
EHP32A – Parts for Mounting

Fasteners Set for Mounting Adapter

For $\phi 33$ mm holes

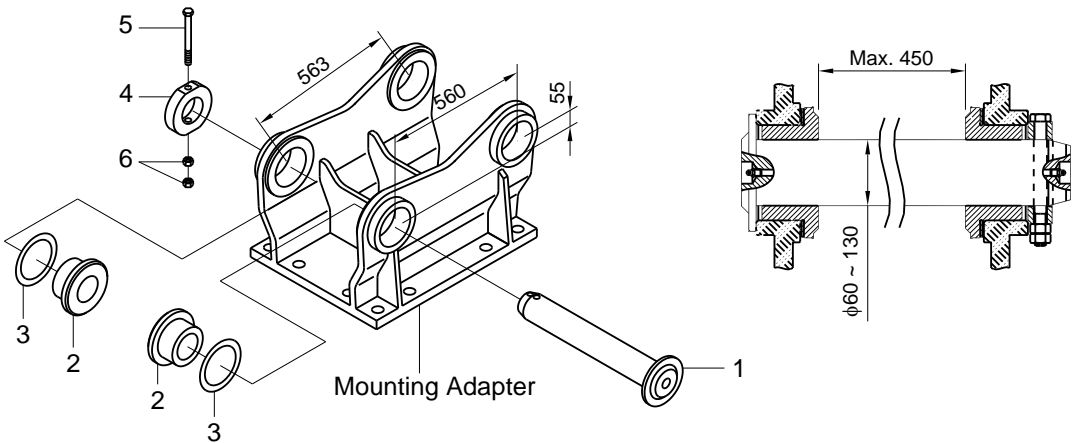


For M30x3.5 threaded holes



Standard Mounting Adapter & Mounting Pin Set

Unit: mm



30T-PFMT-2

EHP32A – Parts for Mounting

ITEM	PART NO.	PART NAME	QTY	S / N	REMARKS
------	----------	-----------	-----	-------	---------

Fasteners Set for Mounting Adapter

	C300-0606	ADAPTER FASTENERS SET	1		
1	S0179863	HEX BOLT	8		M30x3.5xL120-10.9
2	S0139763	HEX BOLT	4		M30x3.5xL80-10.9
3	S5101513	SPRING WASHER	20		M30
4	S4013543	HEX NUT	8		M30x3.5-10-Style1

Standard Mounting Adapter

	B300-7111	MOUNTING ADAPTER	1		
--	-----------	------------------	---	--	--

Mounting Pin Set

	B280-9950Do	MOUNTING PIN SET	2		2 sets / unit
1	B280-9952Do	BRACKET PIN	1		
2	B280-9957Do	SPACER	2		
3	B280-9956Do	SHIM	AR		
4	B280-9955Do	STOP RING	1		
5	S0167261	HEX BOLT	1		M16x2xL170-10.9
6	S4012942	HEX NUT	2		M16x2-10-Style2

Notes

The parts with 'Do' at the end of their parts numbers are should be selected properly according to your carrier.
Please contact Everdigm or our distributor before ordering parts of the mounting pin set.

Hoses for Adapter-Mount Type

1	H001-0001D112	HOSE	2		FH1-1/4-ORFS20-P350-L3000
2	H001-0016D493	HOSE	2		PFH1-1/4-BSP20-P350-L3000
3	H001-0040D006	HOSE	2		UN1-1/4-JIC20-P350-L3000
4	A051-0252	O-RING	4		AS568-025-HsA90
5	S8000291	O-RING	2		JIS P29-HsA90
6	H002-0004D001	CAP	2		ORFS20
7	A061-0026D004	HOSE PLUG	1		ORFS20
8	H002-0011D006	CAP	2		BSP1-1/4(60° Cone)
9	A061-0027D006	HOSE PLUG	1		BSP1-1/4(30° Flare)
10	H002-0054D004	CAP	2		JIC20
11	H002-0053D001	HOSE PLUG	2		JIC20

Notes

When ordering hoses, check the type of hose connection of carrier and proper length of hoses before choosing the hoses.
Special hoses with other connection types or other hose lengths are also available on request.

EHP32A – Seal Kit

ITEM	PART NO.	PART NAME	QTY	S / N	REMARKS
K1	AP303-0036	SEAL KIT (MAIN ASS'Y)	1		Seal Kit for Main Ass'y
1	P302-3001	-DUST SEAL	-2		
2	S8000111	-O-RING	-4		
3	A051-2192	-O-RING	-8		
K2	AC350-0019	SEAL KIT (CYLINDER)	1		Seal Kit for Cylinder
1	S8001101	-O-RING	-1		
2	S8091101	-BACK UP-RING	-2		
3	A059-0001	-WEAR-RING	-2		
4	A056-0020	-PISTON SEAL	-1		
5	A054-0015	-WIPER	-1		
6	A059-2015	-WEAR-RING	-1		
7	A053-0024	-U-RING	-1		
8	A059-0004	-WEAR-RING	-2		
9	S8012101	-O-RING	-1		
10	S8062101	-BACK UP-RING	-1		
11	S8012201	-O-RING	-1		

EHP32A – Shims

ITEM	PART NO.	PART NAME	QTY	S / N	REMARKS
------	----------	-----------	-----	-------	---------

Shims for Jaw

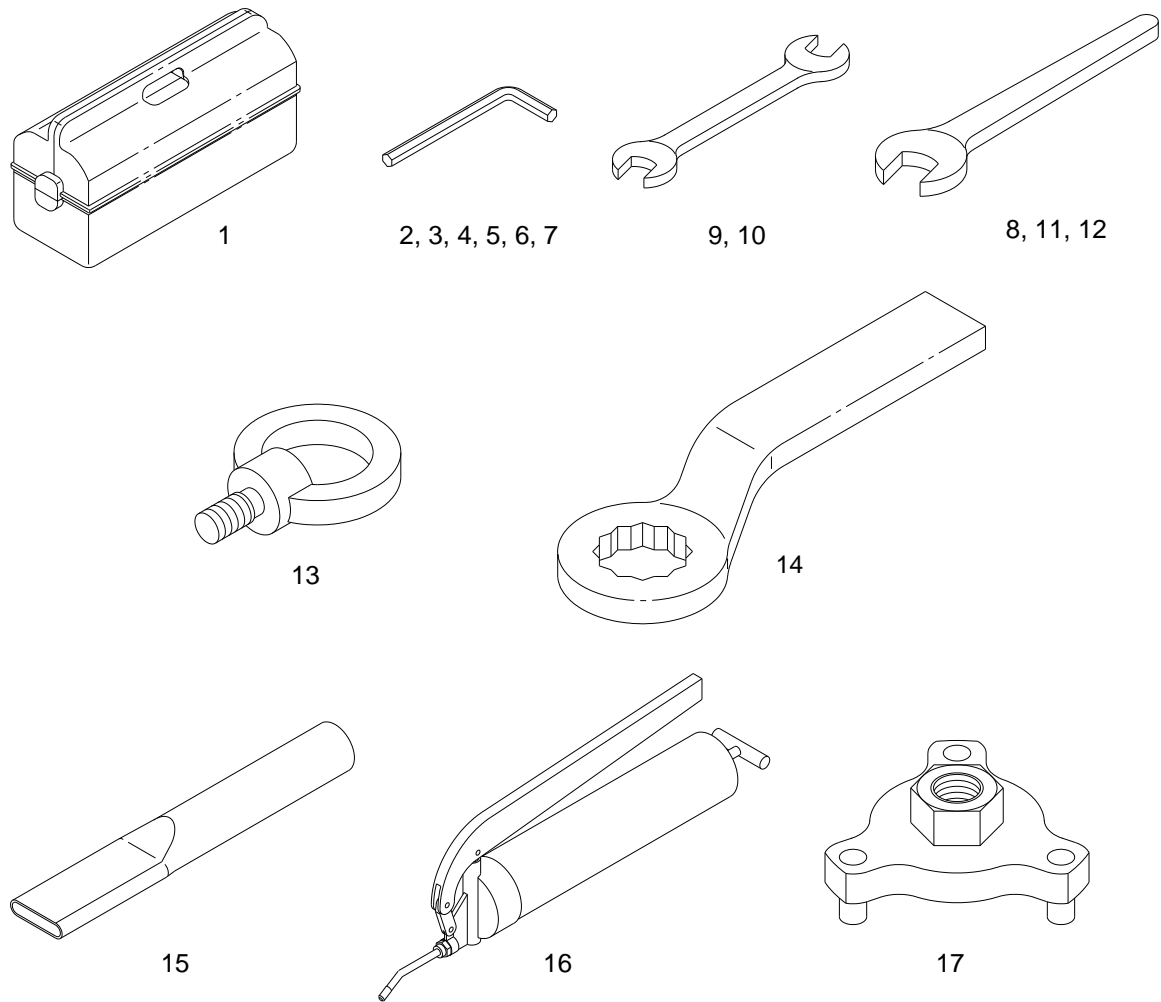
	A035-0005D001	SHIM (0.5)			Thickness: 0.5 mm
	A035-0005D002	SHIM (1.0)			Thickness: 1.0 mm

Shims for Cutter Blades

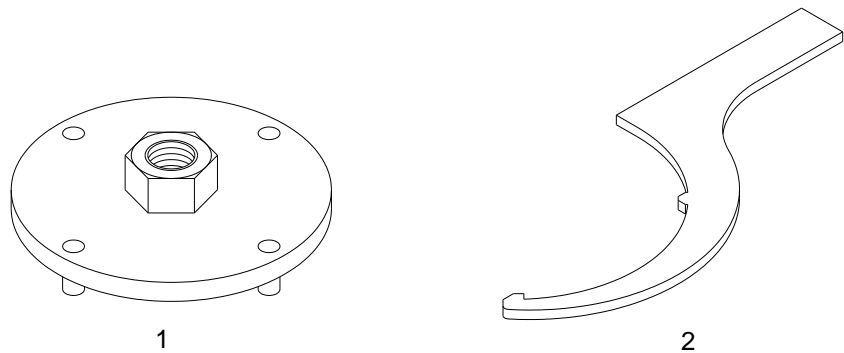
+	C300-4711	SHIM			
Do	001	SHIM (0.1)			Thickness: 0.1 mm
	002	SHIM (0.2)			Thickness: 0.2 mm
	003	SHIM (0.3)			Thickness: 0.3 mm
	004	SHIM (0.5)			Thickness: 0.5 mm
	005	SHIM (1.0)			Thickness: 1.0 mm

EHP32A – Maintenance Tool Kit

Standard Tools



Option Tools



32A-TOOL-01

EHP32A – Maintenance Tool Kit

ITEM	PART NO.	PART NAME	QTY	S / N	REMARKS
------	----------	-----------	-----	-------	---------

Standard Tool Kit

+	AP303-0037	EHP32A TOOL KIT	1		
1	2199-9004	TOOL BOX	1		
2	T6550007	L-WRENCH 6	1		
3	T6550009	L-WRENCH 8	1		
4	T6550011	L-WRENCH 10	1		
5	T6550013	L-WRENCH 12	1		
6	T6550015	L-WRENCH 14	1		
7	T6550022	L-WRENCH 22	1		
8	T6510089	SPANNER 13	1		
9	T6510075	SPANNER 19x22	2		
10	T6510087	SPANNER 30x32	2		
11	T6510028	SPANNER 46	1		
12	T6510029	SPANNER 50	1		
13	S3140043	EYE BOLT M16	2		
14	A090-0031	RING WRENCH 55	1		
15	2199-1005	PIPE	1		
16	2199-9008	GREASE GUN	1		
17	P201-8002A	ADJUST NUT JIG (PCD145)	1		

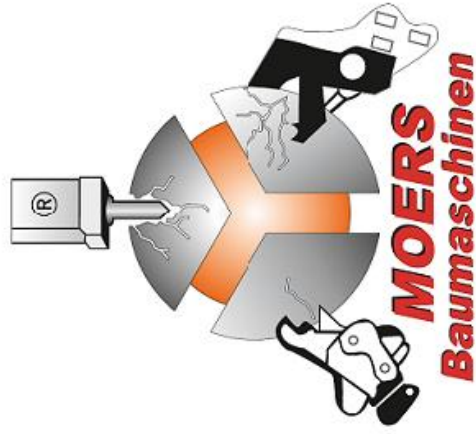
Option Tools

1	A090-0034D002	PISTON JIG	AR		for cylinder maintenance
2	A090-0033D004	HOOK WRENCH	AR		for cylinder maintenance

Notes

Notes

ISO9001 ISO14001



MOERS

Spezialgeräte für Abbruch und Recycling
Spezialbereich Hydraulik - Hämmer



Baumaschinen

Moers Baumaschinen GmbH & Co. KG - Färberstr. 4 - 58119 Hagen - Tel.: 02334 / 90 66 - 0 Fax 02334 / 90 66 - 26

info@moers-baumaschinen.de
www.moers-baumaschinen.de