

# **MOERS**

Spezialgeräte für Abbruch und Recycling  
Spezialbereich Hydraulik - Hämmer

# **Baumaschinen**



Telefon: +49 (0)2334 / 9066-0 ■ Fax: +49 (0)2334 / 9066-26 ■ Färberstr. 4 ■ 58119 Hagen - Hohenlimburg

# Ersatzteilliste

## Betonknacker / Pulverisierer EHP 22 -A



Hagen

# INSTRUCTIONS FOR USE

- This parts manual describes the configuration of the part components of the product and is intended only to assist to order spare parts for maintenance work
- This manual contains no safety information for operating the product or maintenance work. Please observe the safety instructions described in the relevant operation manual.
- The illustrations shown in this manual is not appropriate for workshop instructions, so they should not be used for assembling or disassembling the product. Please refer to the workshop manual for that purpose.
- Use Everdigm genuine parts only.  
Warranties do not cover damages that have been caused or aggravated by use of non-genuine parts.
- For product warranty, please refer to the warranty conditions provided separately.
- The illustrations in this manual show only the overall shapes and positions of the part components so they may not be identical with the actual parts.
- For the purpose of continued product improvement, some information in this manual could be changed without prior notice, and might be differ from your product which was not covered by this publication.
- If you found the information that is unclear or not corresponding with the actual product, contact Everdigm or Everdigm distributor.

## How to use this parts manual:

<Example>

### **RX-20 – CYLINDER UNIT**

3	1	4	2	5	6	7	8
ITEM	PART NO.	PART NAME	QTY	S/N	REMARKS		
+	X123-9001	Cylinder Unit	2				
1	X123-1001	Cylinder Housing	1				
2	X123-9002	Rod Cover Ass'y	1				
3	X123-1002	-Rod Cover	-1	~199	[R X123-1002A]		
	X123-1002A	-Rod Cover	-1	200~			
4	A456-2001	-Slide Seal	-2		[K1]		
4-1	A456-2002	--Seal Ring	--1		[K1] [D]		
4-2	A456-2003	--O-Ring	--1		[K1] [D]		
5	A456-2004	-Dust Wiper	-1		[K1]		
6	X123-1003	Rod	1				
7	X124-1005	Piston	1				
.	.	.					
.	.	.					
.	.	.					

1. Model name: Identification name of the product

2. Title: Title name of the assembly shown in the page

- 
3. Item: Key number which shows the referring number of the part in corresponding illustration.  
For a revised part which replaces the old one with same item number, the item is not shown.  
Item numbers are not always in sequence.
- +..... Represent the title assembly containing the entire part in the illustration.  
\* with the same item number..... Represent selectable parts depending on product version.
4. Part No.: Identification number of the part or assembly.  
The part number might be omitted when the part cannot be supplied separately.
5. Part Name: Part name of the part.  
The parts without a prefix in front of the part name are independent component parts or subassemblies belong to the title assembly in corresponding list.  
Prefix ‘-’..... The parts marked with the prefix ‘-’ in front of the part name are component parts belong to the subassembly shown above of the rows of these parts.  
Prefix ‘--’... The parts marked with the prefix ‘--’ are component parts of the ‘-’ marked subassembly containing these parts.
6. Qty: Quantity used for one unit of their parent assembly containing the parts.  
When the quantity of the title assembly is blank, refer to the page shown with ‘▶’, but when it is not blank, it represents the quantity used for one unit of the product.  
For the parts with the prefix ‘-’ or ‘--’ in front of their part name, the quantity is expressed with that prefix.  
AR... As many as required (variable quantity depending on the product)
7. S/N: Serial number of the product which those parts are applied  
Parts without serial no. indications are used in every product regardless of serial number.
8. Remarks: Supplementary comment. Refer to the following for the code within [ ].  
A..... The parts with this code can be used interchangeably with each other.  
R..... The part with this code is no longer manufactured as a result of a revision and replaced by the new part whose part number follows this code.  
K..... The part with this code is contained in the service kit whose item number follows this code.  
D..... The part with this code cannot be supplied separately. The assembly part containing this part should be ordered.  
S..... Non-standard part which can be supplied by separate order

## How to order parts:

Please note the full model name and serial number of your product. This code can be found on the nameplate of your product. Compare the parts to order with the corresponding parts in the drawings in this parts manual and note the part numbers to order.

When ordering parts, please specify detail part names as shown in the following example,

- Model name of product: RX-20
- Serial number: 135
- Part No.: A123-4567
- Part name: Pin
- Quantity: 2
- Purchaser's name & address: . . . .

## TABLE OF CONTENTS

---

INSTRUCTIONS FOR USE .....	2
Pulverizer Ass'y.....	6
Main Ass'y.....	7
Speed-up Valve.....	11
Cylinder Ass'y .....	13
Parts for Mounting.....	15
Seal Kit.....	17
Shims.....	18
Maintenance Tool Kit.....	19
Notes .....	21

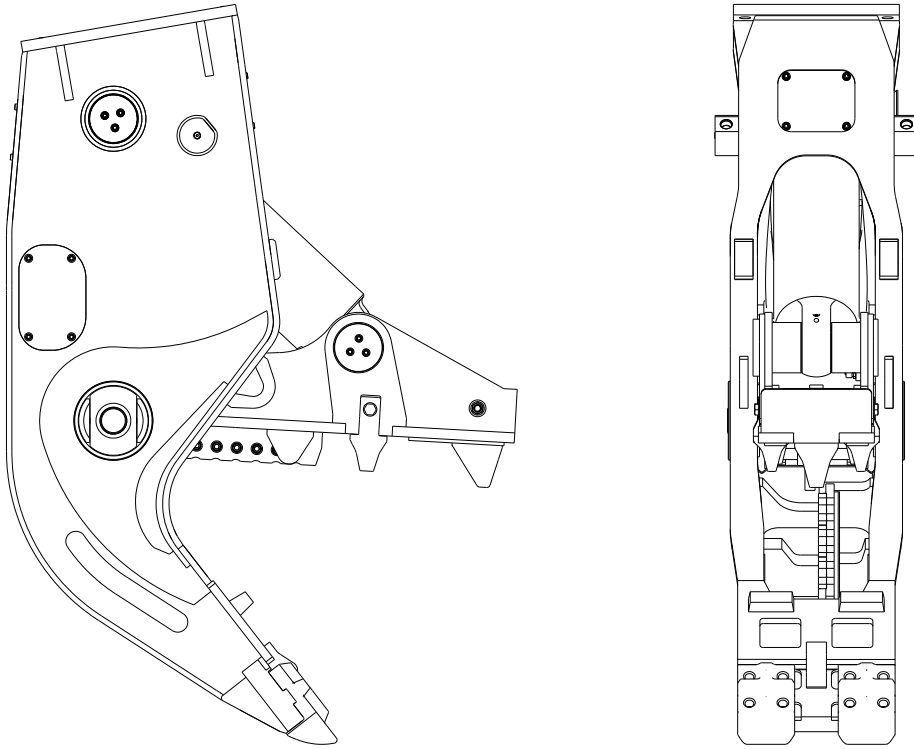
© 2020 Everdigm Corp. All rights reserved.

This manual is copyrighted by Everdigm Corp. with all rights reserved in accordance with prevailing law. It is positively prohibited to use or reproduce its contents in whole or in part without prior written permission.

**BLANK PAGE**

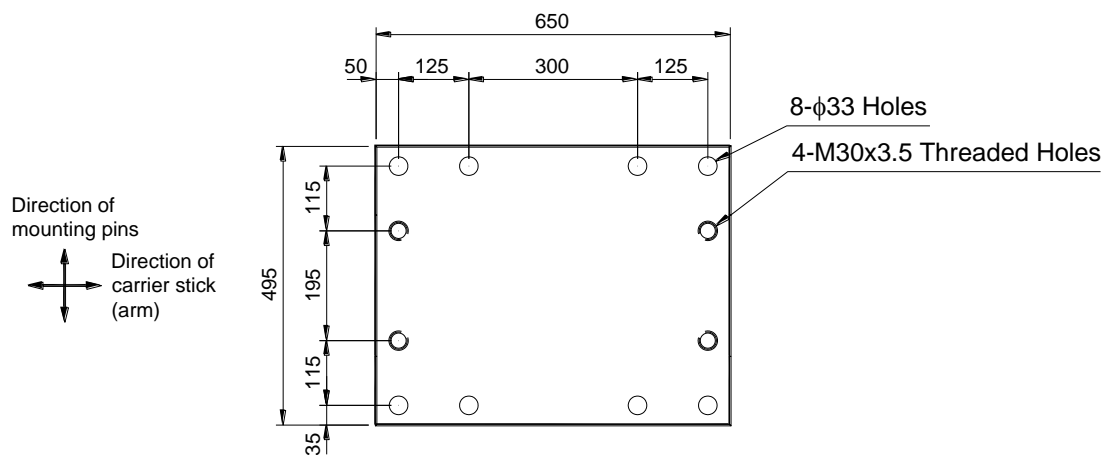
## EHP22A – Pulverizer Ass'y

### Pulverizer Ass'y



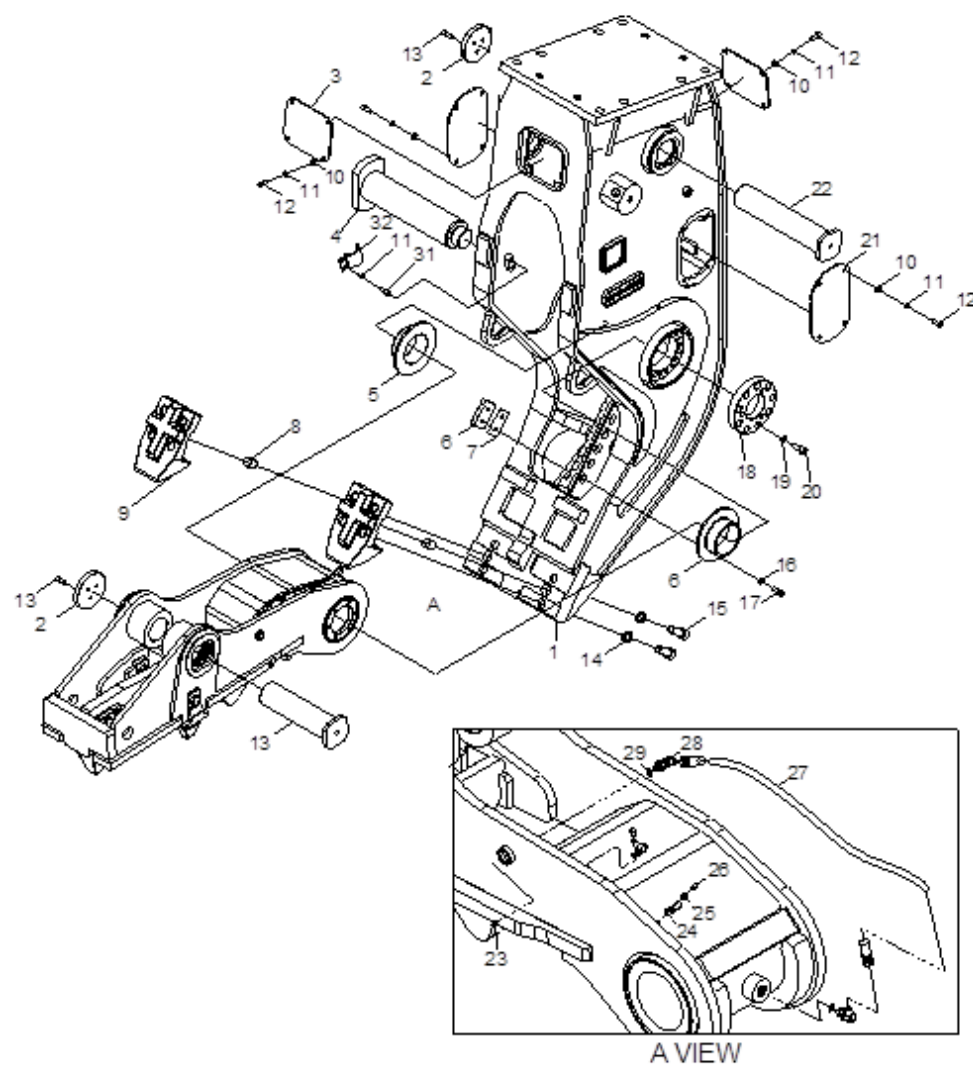
### Mounting Dimensions

Unit: mm



22A-MTG1-1

## EHP22A – Main Ass'y (1/2)



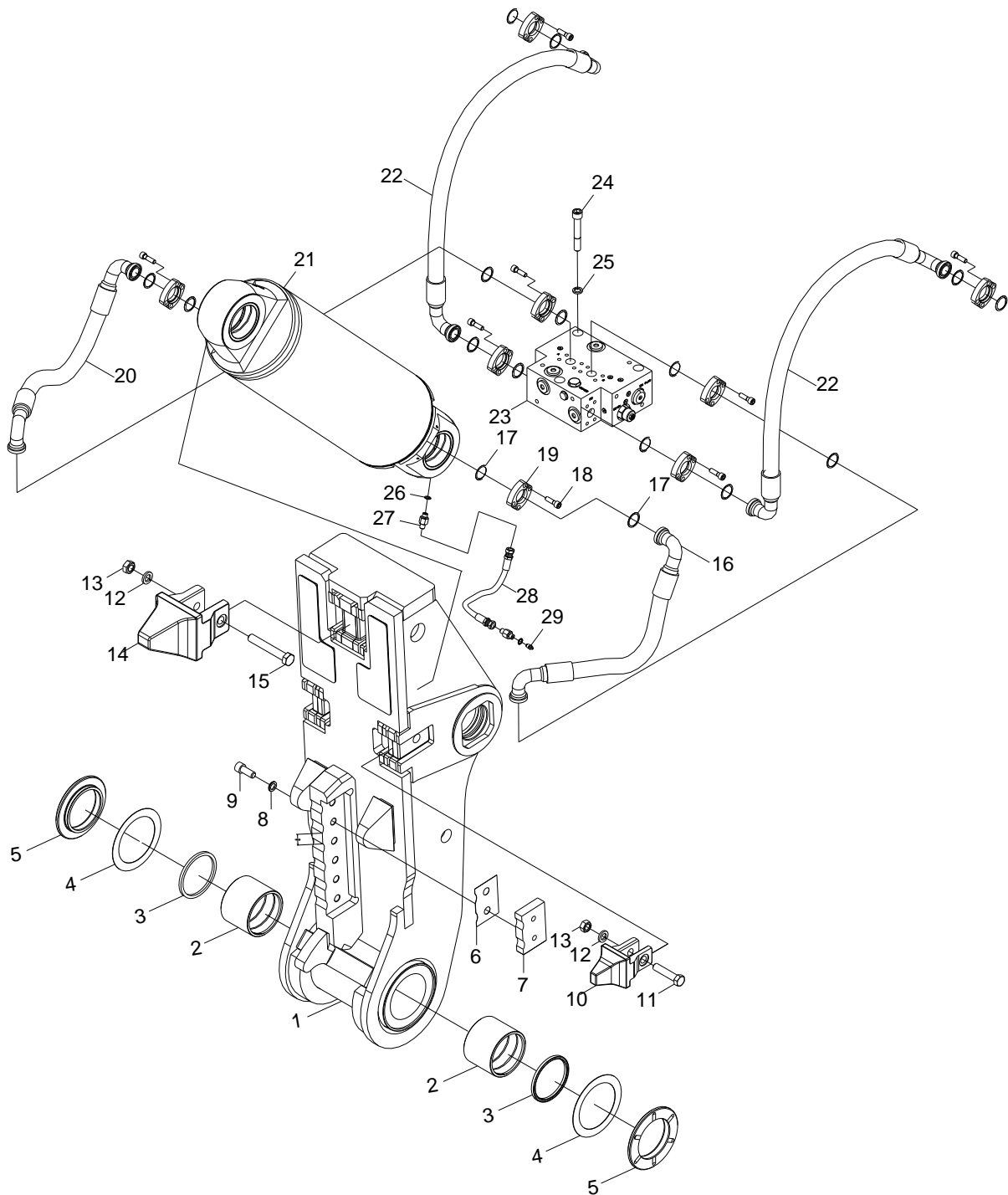
22A-MAIN(1)-01

**EHP22A – Main Ass'y (1/2)**

ITEM	PART NO.	PART NAME	QTY	S / N	REMARKS
+	AP202-0001	MAIN ASS'Y	1		[R AP202-0001A]
+	AP202-0001A	MAIN ASS'Y	1		
1	AP202-0002	BODY	1		[R AP202-0002A]
	AP202-0002A	BODY	1		
2	P202-5020	PIN COVER	1		
3	AP202-0069	COVER PLATE	2		[R AP202-0069A]
	AP202-0069A	COVER PLATE	2		
4	AC202-0006	PIN ASS'Y	1		
5	AP202-0068	BUSH	2		
6	C300-4602	CUTTER BLADE	3		
7	C300-4711Do	SHIM	AR		
8	P202-5043	LOCK PIN	2		
9	P202-4013B	TOOTH; Front	2		[R P202-4013C]
	P202-4013C	TOOTH; Front	2		
10	S5010713	PLAIN WASHER	16		
11	S5100711	SPRING WASHER	24		
12	S2215261	SOCKET BOLT	22		
13	AP202-0070	PIN	1		
14	A015-0003D30	DISK LOCK WASHER	4		
15	S2239371	SOCKET BOLT	4		
16	A015-0003D016	DISK LOCK WASHER	6		
17	S2221461	SOCKET BOLT	6		
18	AC202-0007	COVER	1		[R AC202-0007A]
	AC202-0007A	COVER	1		
19	S5110911	SPRING WASHER	9		
20	S2221563	SOCKET BOLT	9		
21	AP202-0072	COVER PLATE	2		[R AP202-0072A]
	AP202-0072A	COVER PLATE	2		
22	AP202-0071	PIN	1		
23	S6710042	GREASE NIPPLE	1		
24	2124-1509D002	CLIP	2		
25	S5100513	SPRING WASHER	2		
26	S0108663	HEX BOLT	2		
27	H001-0016D453	HOSE	1		
28	H002-0014D001	ELBOW	2		
29	S8000111	O-RING	2		[K1]
30	S221527D	SOCKET BOLT	4		
31	AP202-0075	PLATE	2		



## EHP22A – Main Ass'y (2/2)



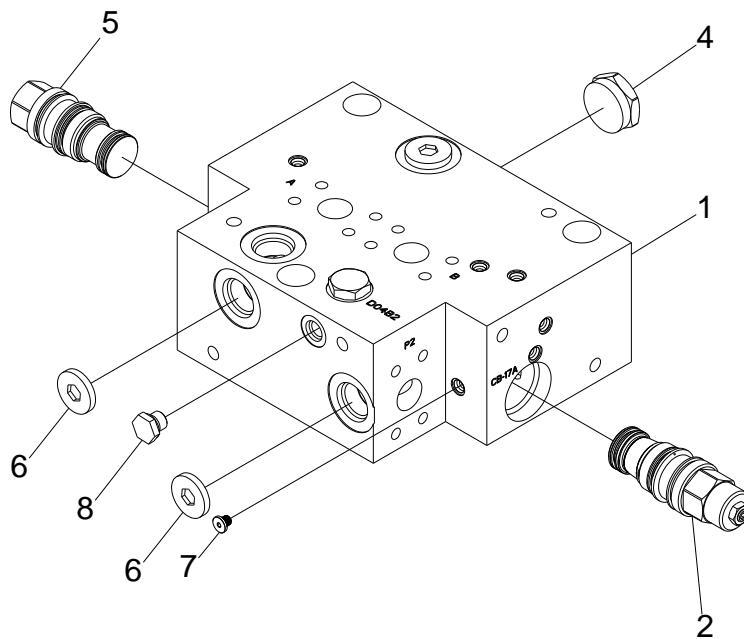
22A-MAIN(2)-01

**EHP22A – Main Ass'y (2/2)**

ITEM	PART NO.	PART NAME	QTY	S / N	REMARKS
+	AP202-0001	MAIN ASS'Y	1		[R AP202-0001A]
+	AP202-0001A	MAIN ASS'Y	1		
1	AP202-0043	JAW ASS'Y	1		
2	P202-5037	BUSH	2		
3	2180-1106D022	DUST SEAL	2		[K1]
4	A035-0004Do	SHIM	AR		
5	P202-5036	BUSH	2		
6	C300-4711Do	SHIM	AR		
7	C300-4602	CUTTER BLADE	3		
8	A015-0003D016	DISK LOCK WASHER	6		
9	S2221461	SOCKET BOLT	6		
10	P202-4009B	TOOTH; Small	2		
11	S0173171	HEX BOLT	2		
12	S5101211	SPRING WASHER	3		
13	S4013241	HEX NUT	3		
14	P202-4011B	TOOTH; Large	1		
15	S0173571	HEX BOLT	1		
16	H001-0031D049	HOSE	1		[R H001-0031D050]
	H001-0031D050	HOSE	1		
17	A051-2192	O-RING	8		[K1]
18	S2215461	SOCKET BOLT	32		
19	2181-9081	SPLIT FLANGE	16		
20	H001-0031D049	HOSE	1		[R H001-0031D050]
	H001-0031D050	HOSE	1		
21	AP205-0061	CYLINDER ASS'Y	1		[R AP205-0061A]
	AP205-0061A	CYLINDER ASS'Y	1		[R AP205-0061B]
	AP205-0061B	CYLINDER ASS'Y	1		
22	H001-0030D062	HOSE	2		[R H001-0030D066]
	H001-0030D066	HOSE	2		
23	AP302-0038	SPEED UP VALVE	1		
24	S222277D	SOCKET BOLT	3		
25	S5110911	SPRING WASHER	3		
26	S8000111	O-RING	2		[K1]
27	H002-0012D006	ADAPTER	2		
28	H001-0016D483	HOSE	1		[R H001-0016D484]
	H001-0016D484	HOSE	1		
29	S6710042	GREASE NIPPLE	1		

## EHP22A – Speed-up Valve

---

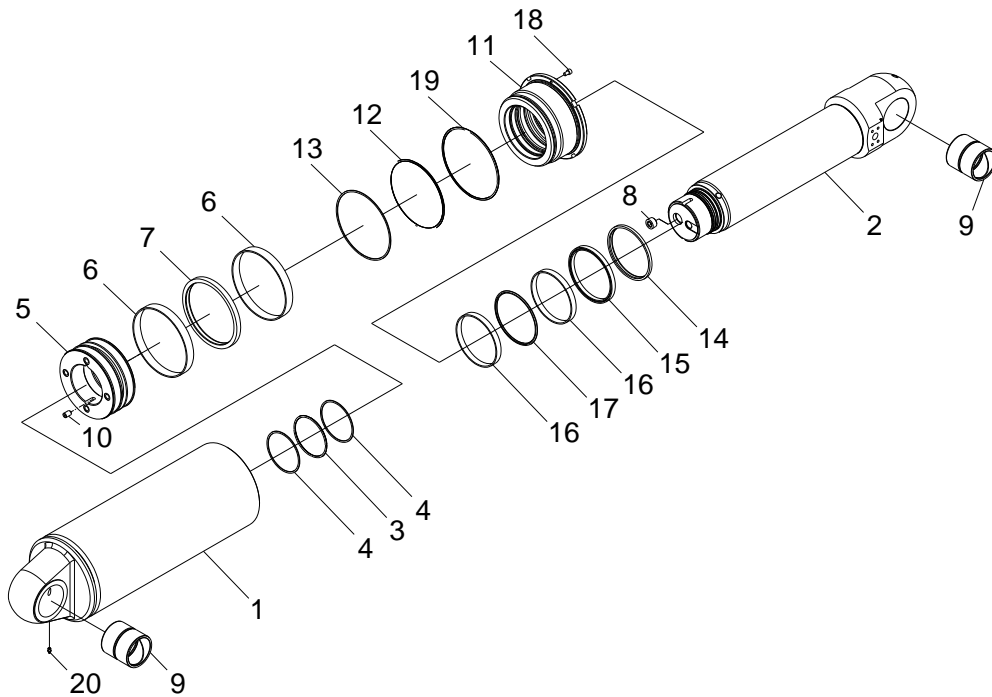


22A-SPVV-1\_01

**EHP22A – Speed-up Valve**

ITEM	PART NO.	PART NAME	QTY	S / N	REMARKS
+	AP302-0038	SPEED-UP VALVE	1		
1	AP302-0039	VALVE BLOCK	1		
2	AC202-0029	COUNTER BALANCE VALVE	1		
3	AX000-1747	CAVITY PLUG	1		
4	AC130-0087	CHECK VALVE	1		
5	AC430-0080	PILOT CHECK VALVE	1		
6	AC300-0216	PLUG	4		
7	AC130-0130	PLUG	4		

## EHP22A- Cylinder Ass'y



33-CYLA-1\_01

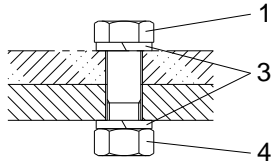
**EHP22A– Cylinder Ass'y**

ITEM	PART NO.	PART NAME	QTY	S / N	REMARKS
+	AP205-0061	CYLINDER ASS'Y	1	H101~H102	[R AP205-0061A]
+	AP205-0061A	CYLINDER ASS'Y	1	H103~H104	[R AP205-0061B]
+	AP205-0061B	CYLINDER ASS'Y	1		
1	AP205-0062	TUBE ASS'Y	1	H101~H102	[R AP205-0062A]
	AP205-0062A	TUBE ASS'Y	1		
2	AP205-0066	ROD	1	H101~H102	[R AP205-0066A]
	AP205-0066A	ROD	1	H103~H104	[R AP205-0066B]
	AP205-0066B	ROD	2		
3	S8001201	O-RING	1		[K2]
4	S8061200	BACK UP-RING	2		[K2]
5	AP205-0068	PISTON	1		
6	A0590005	WEAR-RING	2		[K2]
7	A056-0025	PISTON SEAL	1		[K2]
8	2181-1116D005	PLUG	1		
9	AP205-0067	BUSH	2	H101~H102	[R AP205-0067A]
	AP205-0067A	BUSH	2		
10	S3527707	STE SCREW	2		
11	AP205-0065	ROD BUSH	1		
12	S8012001	O-RING	1		[K2]
13	S8092000	BACK UP- RING	1		[K2]
14	A054-0015	WIPER	1		[K2]
15	A053-0024	U-RING	1		[K2]
16	A059-2014	WEAR-RING	2		[K2]
17	A053-0075	BUFFER SEAL	1		[K2]
18	C300-3111	SCREW SEAT	2		
19	S8012101	O-RING	1		[K2]
20	S6710042	GREASE NIPPLE(A Type)	1		

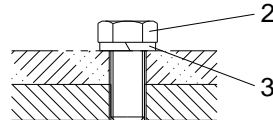
## EHP22A– Parts for Mounting

### Fasteners Set for Mounting Adapter

For  $\phi 33$  mm holes

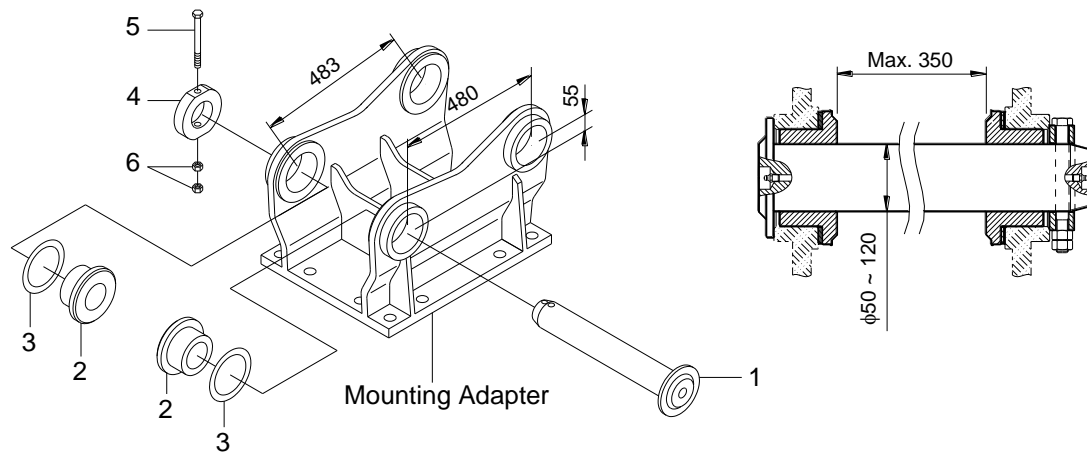


For M30x3.5 threaded holes



### Standard Mounting Adapter & Mounting Pin Set

Unit: mm



20T-PFMT-2A-1

## EHP22A– Parts for Mounting

ITEM	PART NO.	PART NAME	QTY	S / N	REMARKS
------	----------	-----------	-----	-------	---------

### Fasteners Set for Mounting Adapter

	C300-0606	ADAPTER FASTENERS SET	1		
1	S0179863	HEX BOLT	8		M30x3.5xL120-10.9
2	S0139763	HEX BOLT	4		M30x3.5xL80-10.9
3	S5101513	SPRING WASHER	20		M30
4	S4013543	HEX NUT	8		M30x3.5-10-Style1

### Standard Mounting Adapter

	B250-7046	MOUNTING ADAPTER	1		
--	-----------	------------------	---	--	--

### Mounting Pin Set

	B220-9950Do	MOUNTING PIN SET	2		2 sets / unit
1	B220-9952Do	BRACKET PIN	1		
2	B220-9957Do	SPACER	2		
3	B220-9955Do	SHIM	AR		
4	B220-9956Do	STOP RING	1		
5	S0167261	HEX BOLT	1		M16x2xL170-10.9
6	S4012942	HEX NUT	2		M16x2-10-Style2

#### Notes

The parts with 'Do' at the end of their parts numbers are should be selected properly according to your carrier.  
Please contact Everdigm or our distributor before ordering parts of the mounting pin set.

### Hoses for Adapter-Mount Type

1	H001-0004D050	HOSE	2		FH1-ORFS16-P350-L2000
1	H001-0041D004	HOSE	2		FH1-JIC16-P350-L2000
2	A051-0212	O-RING	2		AS568-021-HsA90
3	A051-2192	O-RING	2		AS568-219-HsA90
4	H002-0004D002	CAP	2		ORFS16
5	A061-0026D003	HOSE PLUG	1		ORFS16

#### Notes

When ordering hoses, check the type of hose connection of carrier and proper length of hoses before choosing the hoses.  
Special hoses with other connection types or other hose lengths are also available on request.



**EHP22A– Seal Kit**

ITEM	PART NO.	PART NAME	QTY	S / N	REMARKS
K1	AP205-0069	SEAL KIT (MAIN ASS'Y)	1		Seal Kit for Main Ass'y
1	A051-2192	-O-RING	-8		
2	2180-1106D022	-DUST SEAL	-2		
3	S8000111	-O-RING	-4		
K2	AP205-0070	SEAL KIT (CYLINDER)	-1		Seal Kit for Cylinder
1	S8001201	-O-RING	-1		
2	S8061200	-BACK UP-RING	-2		
3	A059-0005	-WEAR-RING	-2		
4	A056-0025	-PISTON SEAL	-1		
5	S8012001	-O-RING	-1		
6	S8092000	-BACK UP- RING	-1		
7	A054-0015	-WIPER	-1		
8	A053-0024	-U-RING	-1		
9	A059-2014	-WEAR-RING	-2		
10	A053-0075	-BUFFER SEAL	-1		
11	S8012101	O-RING	-1		

**EHP22A– Shims**

ITEM	PART NO.	PART NAME	QTY	S / N	REMARKS
------	----------	-----------	-----	-------	---------

**Shims for Jaw**

	A035-0004D001	SHIM (0.5)			Thickness: 0.5 mm
	A035-0004D002	SHIM (1.0)			Thickness: 1.0 mm

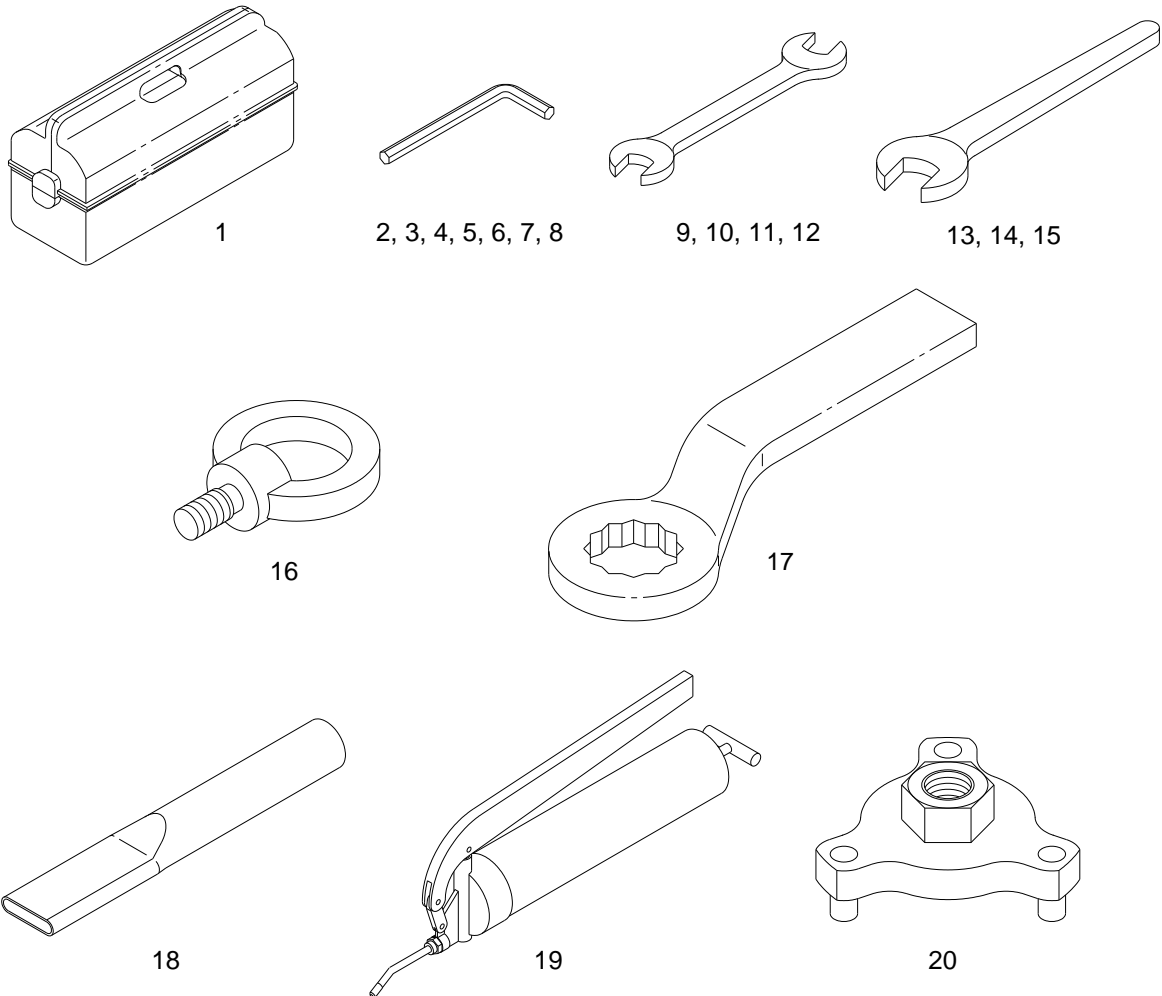
**Shims for Cutter Blades**

+	C300-4711	SHIM			
Do	001	SHIM (0.1)			Thickness: 0.1 mm
	002	SHIM (0.2)			Thickness: 0.2 mm
	003	SHIM (0.3)			Thickness: 0.3 mm
	004	SHIM (0.5)			Thickness: 0.5 mm
	005	SHIM (1.0)			Thickness: 1.0 mm

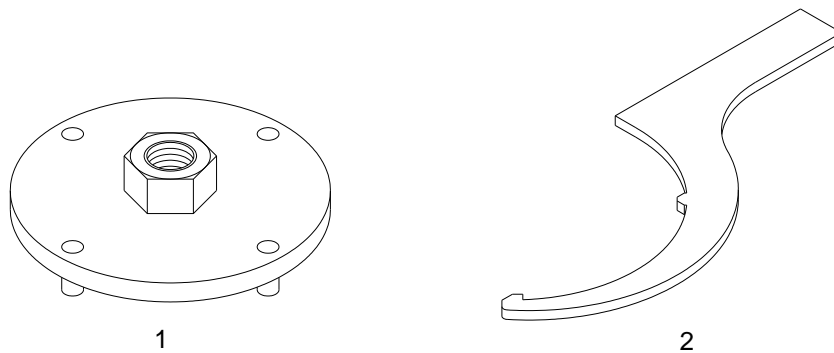
## EHP22A– Maintenance Tool Kit

---

### Standard Tools



### Option Tools



EHP(R)-TOOL-1

**EHP22A– Maintenance Tool Kit**

ITEM	PART NO.	PART NAME	QTY	S / N	REMARKS
------	----------	-----------	-----	-------	---------

**Standard Tool Kit**

+	P202-0609A	EHP22A TOOL KIT	1		
1	2199-9004	TOOL BOX	1		
2	T6550006	L-WRENCH 5	1		
3	T6550007	L-WRENCH 6	1		
4	T6550009	L-WRENCH 8	1		
5	T6550011	L-WRENCH 10	1		
6	T6550013	L-WRENCH 12	1		
7	T6550015	L-WRENCH 14	1		
8	T6550022	L-WRENCH 22	1		
9	T6510071	SPANNER 14x17	1		
10	T6510075	SPANNER 19x22	1		
11	T6510081	SPANNER 24x27	1		
12	T6510087	SPANNER 30x32	2		
13	T6510025	SPANNER 36	1		
14	T6510028	SPANNER 46	1		
17	A090-0031	RING WRENCH 55	1		
18	2199-1005	PIPE	1		
19	2199-9008	GREASE GUN	1		
20	P201-8002A	ADJUST NUT JIG (PCD145)	1		

**Option Tools**

1	A090-0034D002	PISTON JIG	AR	for cylinder maintenance
2	A090-0033D004	HOOK WRENCH	AR	for cylinder maintenance

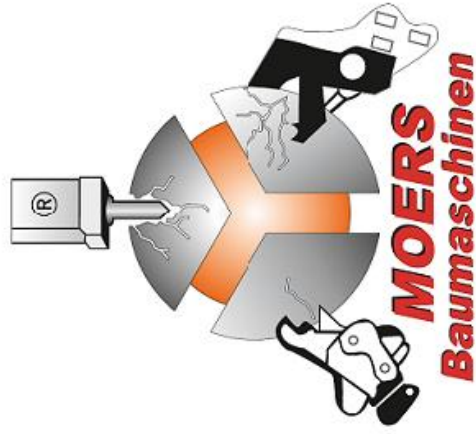
## Notes

---

## Notes

---

ISO9001 ISO14001



# MOERS

Spezialgeräte für Abbruch und Recycling  
Spezialbereich Hydraulik - Hämmer



# Baumaschinen

Moers Baumaschinen GmbH & Co. KG - Färberstr. 4 - 58119 Hagen - Tel.: 02334 / 90 66 - 0 Fax 02334 / 90 66 - 26

[info@moers-baumaschinen.de](mailto:info@moers-baumaschinen.de)  
[www.moers-baumaschinen.de](http://www.moers-baumaschinen.de)