

MOERS

Spezialgeräte für Abbruch und Recycling
Spezialbereich Hydraulik - Hämmer

Baumaschinen



Telefon: +49 (0)2334 / 9066-0 ■ Fax: +49 (0)2334 / 9066-26 ■ Färberstr. 4 ■ 58119 Hagen - Hohenlimburg

Ersatzteilliste

Hydraulikhammer EHB 40



Hagen

INSTRUCTIONS FOR USE

- This parts manual describes the configuration of the part components of the product and is intended only to assist to order spare parts for maintenance work
- This manual contains no safety information for operating the product or maintenance work. Please observe the safety instructions described in the relevant operation manual.
- The illustrations shown in this manual is not appropriate for workshop instructions, so they should not be used for assembling or disassembling the product. Please refer to the workshop manual for that purpose.
- Use Everdigm genuine parts only.
Warranties do not cover damages that have been caused or aggravated by use of non-genuine parts.
- For product warranty, please refer to the warranty conditions provided separately.
- The illustrations in this manual show only the overall shapes and positions of the part components so they may not be identical with the actual parts.
- For the purpose of continued product improvement, some information in this manual could be changed without prior notice, and might be differ from your product which was not covered by this publication.
- If you found the information that is unclear or not corresponding with the actual product, contact Everdigm or Everdigm distributor.

How to use this parts manual:

<Example>

EX-20 – CYLINDER UNIT

ITEM	PART NO.	PART NAME	QTY	S/N	REMARKS
+	X123-9001	Cylinder Unit	2		
1	X123-1001	Cylinder Housing	1		
2	X123-9002	Rod Cover Ass'y	1		
3	X123-1002	-Rod Cover	-1	~199	[R X123-1002A]
	X123-1002A	-Rod Cover	-1	200~	
4	A456-2001	-Slide Seal	-2		[K1]
4-1	A456-2002	--Seal Ring	--1		[K1] [D]
4-2	A456-2003	--O-Ring	--1		[K1] [D]
5	A456-2004	-Dust Wiper	-1		[K1]
6	X123-1003	Rod	1		
7	X124-1005	Piston	1		
⋮	⋮	⋮			

1. Model name: Identification name of the product

2. Title: Title name of the assembly shown in the page

-
3. Item: Key number which shows the referring number of the part in corresponding illustration.
For a revised part which replaces the old one with same item number, the item is not shown.
Item numbers are not always in sequence.
+..... Represent the title assembly containing the entire part in the illustration.
* with the same item number..... Represent selectable parts depending on product version.
4. Part No.: Identification number of the part or assembly.
The part number might be omitted when the part cannot be supplied separately.
5. Part Name: Part name of the part.
The parts without a prefix in front of the part name are independent component parts or subassemblies belong to the title assembly in corresponding list.
Prefix '-'. The parts marked with the prefix '-' in front of the part name are component parts belong to the subassembly shown above of the rows of these parts.
Prefix '--'. The parts marked with the prefix '--' are component parts of the '-' marked subassembly containing these parts.
6. Qty: Quantity used for one unit of their parent assembly containing the parts.
When the quantity of the title assembly is blank, refer to the page shown with '►', but when it is not blank, it represents the quantity used for one unit of the product.
For the parts with the prefix '-' or '--' in front of their part name, the quantity is expressed with that prefix.
AR... As many as required (variable quantity depending on the product)
7. S/N: Serial number of the product which those parts are applied
Parts without serial no. indications are used in every product regardless of serial number.
8. Remarks: Supplementary comment. Refer to the following for the code within [].
A..... The parts with this code can be used interchangeably with each other.
R..... The part with this code is no longer manufactured as a result of a revision and replaced by the new part whose part number follows this code.
K..... The part with this code is contained in the service kit whose item number follows this code.
D..... The part with this code cannot be supplied separately. The assembly part containing this part should be ordered.
S..... Non-standard part which can be supplied by separate order

How to order parts:

Please note the full model name and serial number of your product. This code can be found on the nameplate of your product. Compare the parts to order with the corresponding parts in the drawings in this parts manual and note the part numbers to order.

When ordering parts, please specify detail part names as shown in the following example,

- Model name of product: EX-20
- Serial number: 135
- Part No.: A123-4567
- Part name: Pin
- Quantity: 2
- Purchaser's name & address:

TABLE OF CONTENTS

INSTRUCTIONS FOR USE 2

EHB40 – Product Dimensions..... 5

EHB40 – Power Cell Ass’y 7

EHB40 – Cylinder Ass’y 9

EHB40 – Valve Ass’y..... 10

EHB40 – Cylinder Bush Ass’y 11

EHB40 – Back Head Ass’y..... 12

EHB40 – Front Head Ass’y 13

EHB40 – Accumulator Ass’y..... 14

EHB40 – Swivel Joint..... 15

EHB40 – Seal Kit 18

EHB40 – Tools (Chisels) 19

EHB40 – Bracket Ass’y; BA 21

EHB40 – Mounting Adapter and Hoses 22

EHB40 – Gas Charging Kit 23

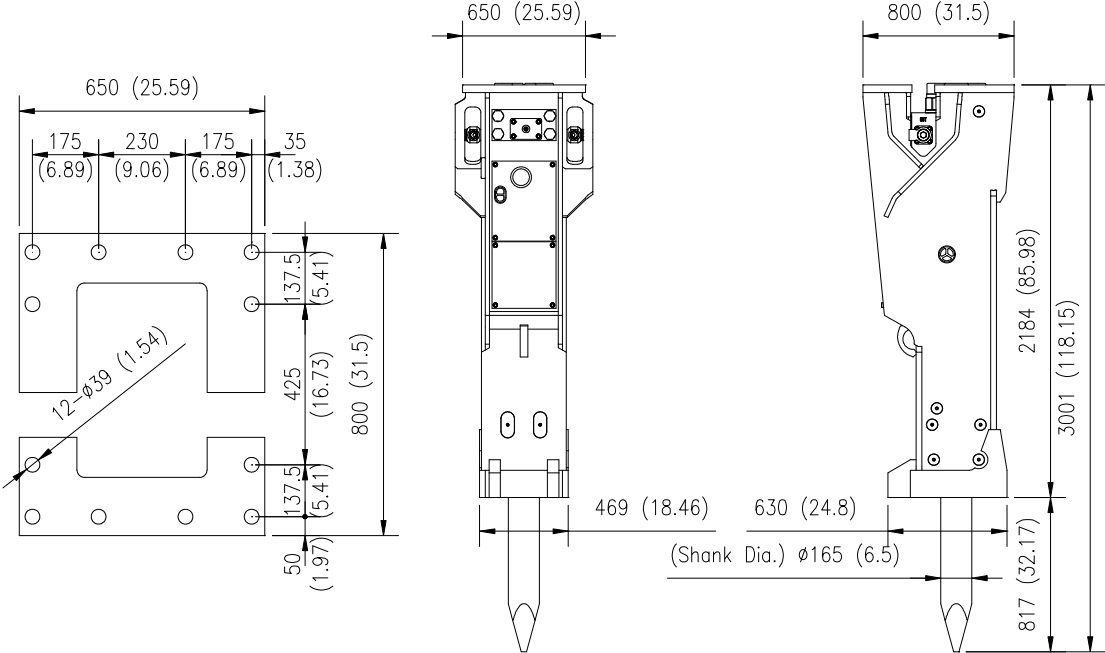
EHB40 – Maintenance Tool Kit 25

Copyright © 2010 Everdigm Corp. All rights reserved.
 This manual is copyrighted by Everdigm Corp. with all rights reserved in accordance with prevailing law. It is positively prohibited to use or reproduce its contents in whole or in part without prior written permission.

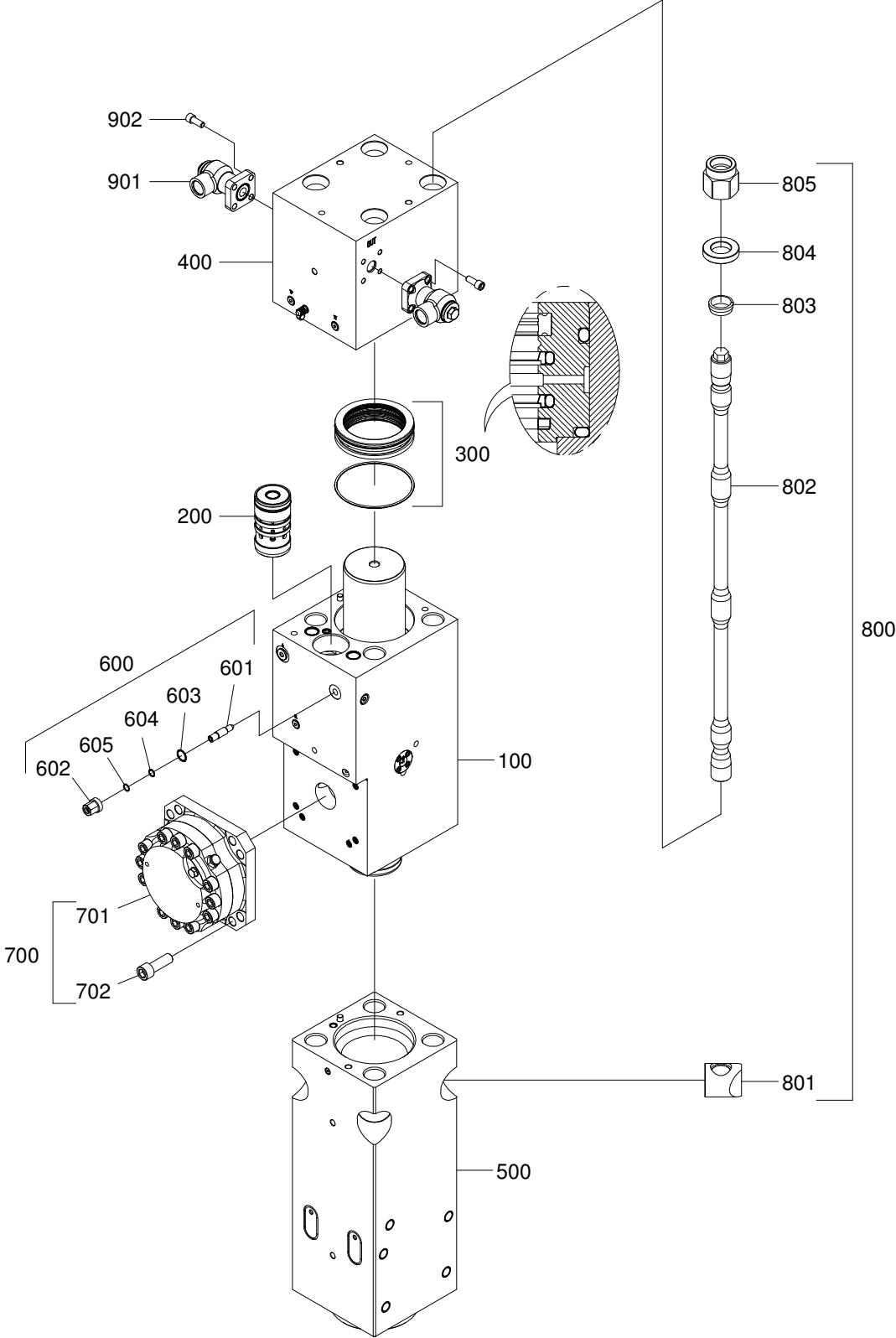
EHB40 – Product Dimensions

Unit: mm (inch)

EHB40-BA



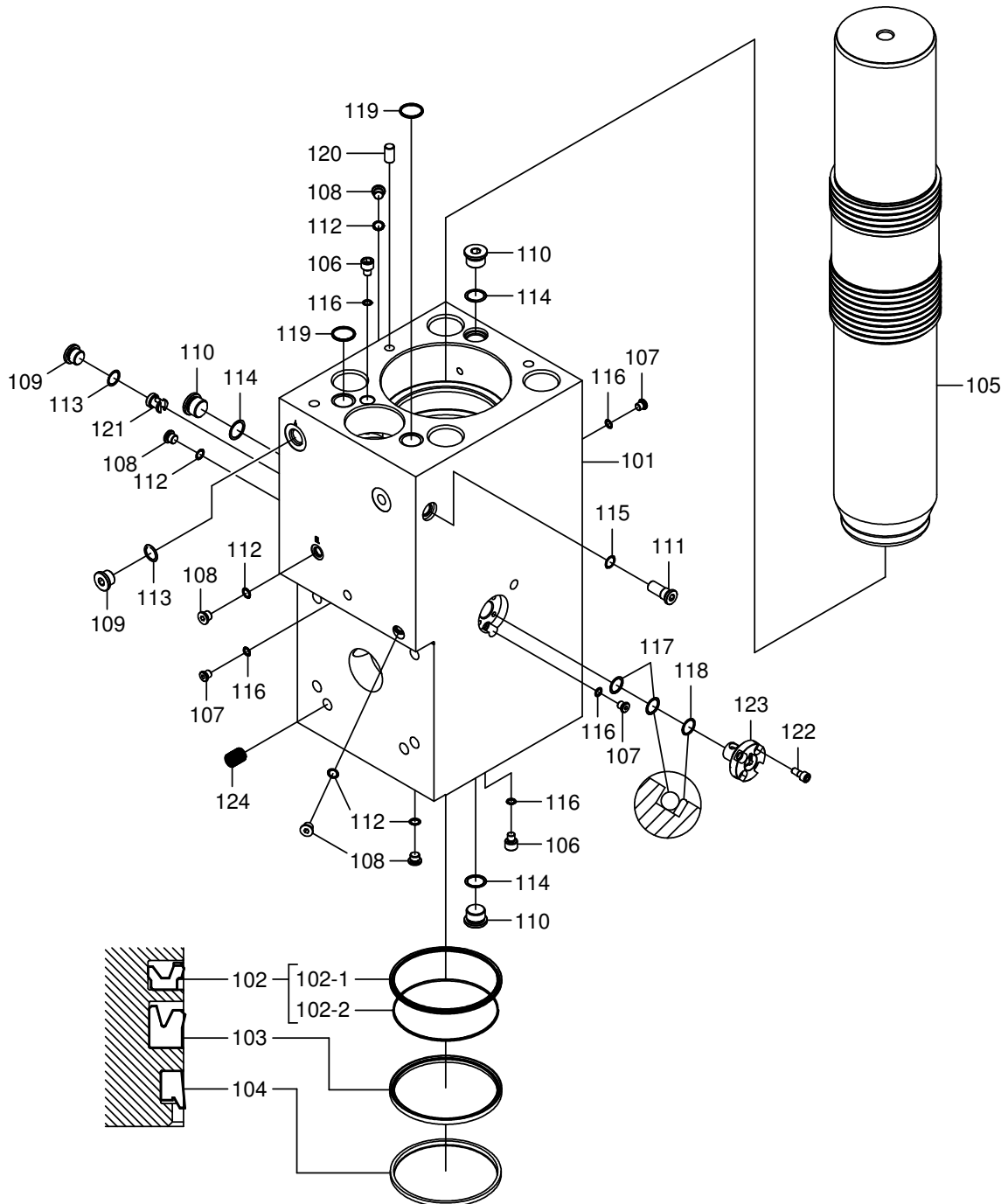
EHB40 – Power Cell Ass’y



EHB40 – Power Cell Ass’y

ITEM	PART NO.	PART NAME	QTY	S/N	REMARKS
+	B402-9901	Power-cell Ass’y	1		
100	B402-9801	Cylinder Ass’y	1		
200	B401-9802	Valve Ass’y	1		
300	B400-9803	Cylinder Bush Ass’y	1		
400	B402-9804	Back Head Ass’y	1		
500	B402-9805	Front Head Ass’y	1		
600	B251-9806	Pressure Adjuster Valve Ass’y	1		
601	A082-0076	-Pressure Adjuster Valve	-1		
602	A082-0048	-Adjuster Nut	-1		
603	S8010301	-O-ring	-1		[K5]
604	S8000181	-O-ring	-1		[K5]
605	S8060181	-Back-up Ring	-1		[K5]
700	B400-9807	Accumulator Ass’y	1		
701	B400-9902	-Accumulator Ass’y	-1		
702	A011-0005	-Hex. Socket Bolt	-8		
800	B400-0603	Through Bolt Kit	4		
801	B400-6003	-Front Head Nut	-1		
802	B400-6004	-Through Bolt	-1		
803	B400-6005	-Back Head Bush	-1		
804	B400-6002	-Back Head Washer	-1		
805	B400-6001	-Back Head Nut	-1		
901	A062-9004	Swivel Joint	2		[R AA062-0066]
	AA062-0066	Swivel Joint	2		[R AA062-0031]
	AA062-0031	Swivel Joint	2		[R AA062-0049]
	AA062-0049	Swivel Joint	2		
902	S2221461	Hex. Socket Bolt	8		M16x2.0xL40-10.9T

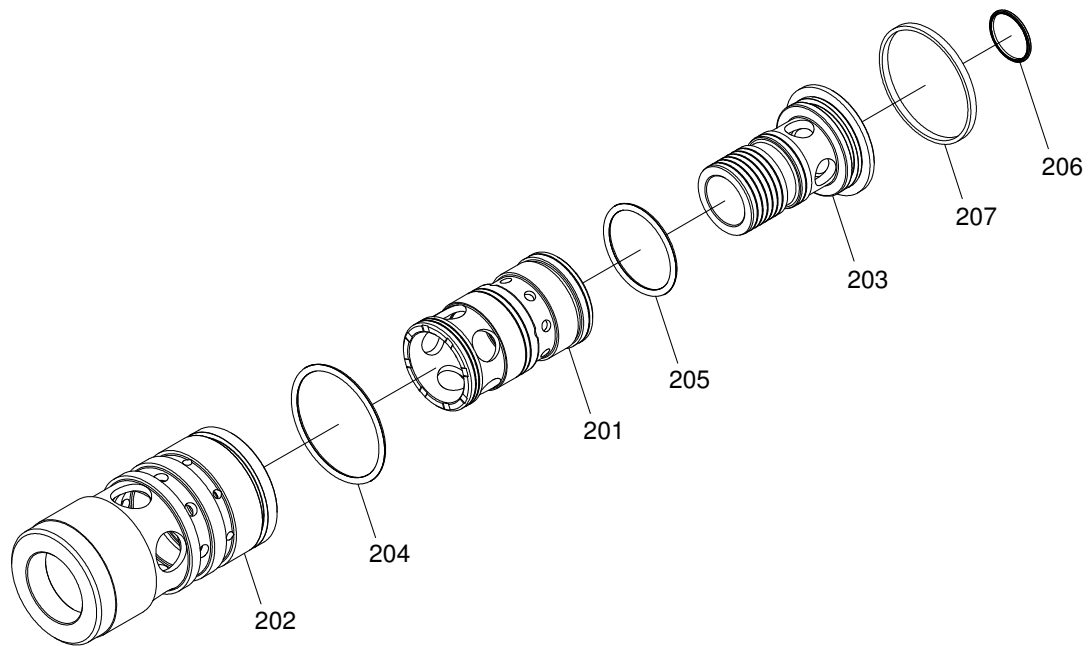
EHB40 – Cylinder Ass'y



EHB40 – Cylinder Ass'y

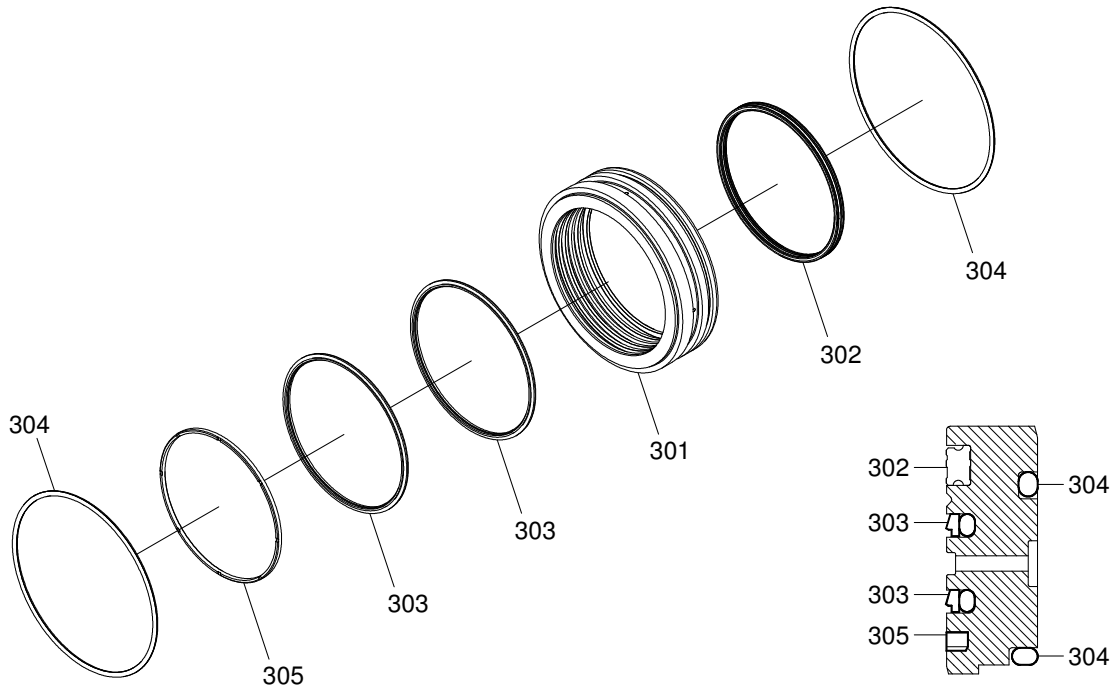
ITEM	PART NO.	PART NAME	QTY	S/N	REMARKS
+	B402-9801	Cylinder Ass'y	1		
101	B402-1001	Cylinder	1		
102	AA053-0021	Buffer Ring	1		[R AA053-0035]
	AA053-0035	Buffer Ring	1		[K2]
102-1		-Seal Ring	-1		[K2] [D]
102-2		-Back-up Ring	-1		[K2] [D]
103	AA053-0022	U-Packing	1		[R AA053-0036]
	AA053-0036	U-Packing	1		[K2]
104	AA054-0012	Dust Seal	1		[R AA054-0017]
	AA054-0017	Dust Seal	1		[K2]
105	B402-1002	Piston	1		
106	A061-0002	Plug	2		BSP 1/4
107	A061-0034	Plug	3		BSP 1/4
108	2181-1890D003	Plug	5		BSP 3/8
109	A061-0015	Plug	2		BSP 3/4
110	A061-0024	Plug	3		BSP 1
111	A061-0050	Plug	1		BSP 1/2
112	S8000141	O-ring	5		[K5]
113	S8000241	O-ring	3		[K5]
114	S8000291	O-ring	3		[K5]
115	S8000181	O-ring	1		[K5]
116	S8000111	O-ring	5		[K5]
117	S8010251	O-ring	2		[K5]
118	S8090251	Back-up Ring	1		[K5]
119	A053-0085D032	Static Seal	2		[K5]
120	A021-0003	Lock Pin	1		
121	A061-0056	Shut-off Valve	1		
122	S2212361	Hex. Socket Bolt	4		M10x1.5XL35-10.9T
123	A082-9019	Speed Valve Ass'y	1		
124	A016-0001D001	Heli-Coil	8		

EHB40 – Valve Ass’y



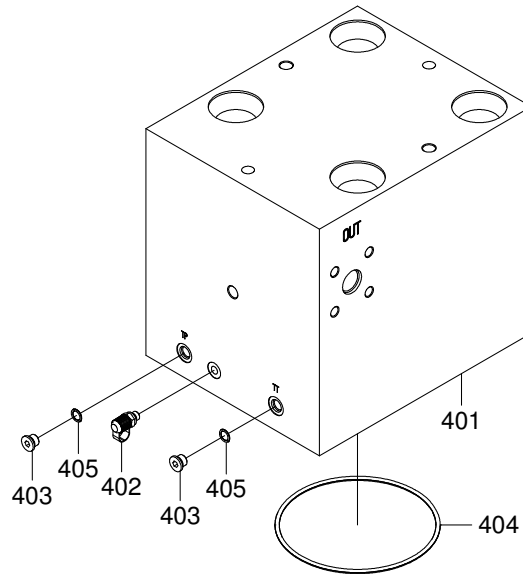
ITEM	PART NO.	PART NAME	QTY	S/N	REMARKS
+	B401-9802	Valve Ass’y	1		
201	B400-2004	Valve	1		
202	B400-2005	Valve Bush	1		
203	B401-2001	Valve Plug	1		
204	S8000901	O-ring	1		[K5]
205	S8000651	O-ring	1		[K5]
206	A053-0085D032	Static Seal	1		[K5]
207	A052-0024	Protect Ring	1		[K5]

EHB40 – Cylinder Bush Ass’y



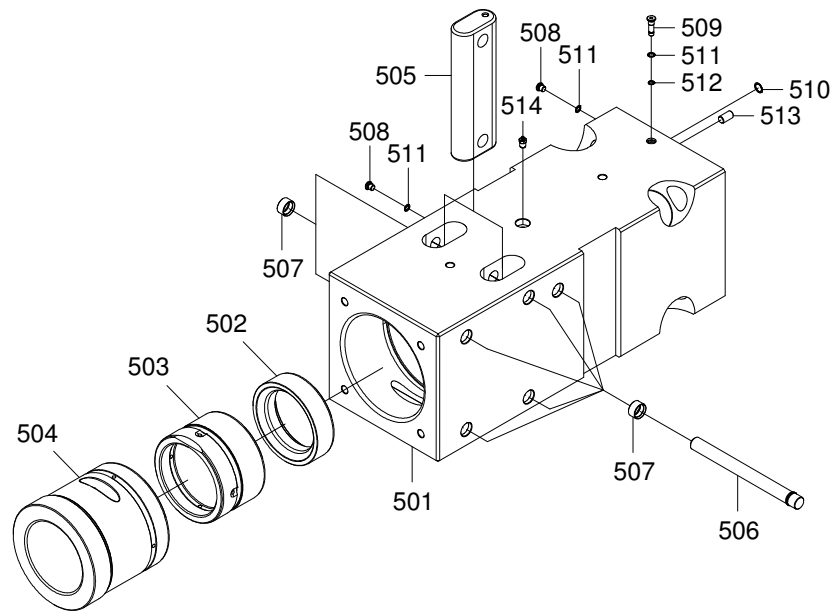
ITEM	PART NO.	PART NAME	QTY	S/N	REMARKS
+	B400-9803	Cylinder Bush Ass'y	1		
301	B400-1010	Cylinder Bush	1		
302	A057-0017	Gas Seal	1		[K3]
303	A056-0040	Step Seal	2		[K3]
303-1		-Seal Ring	-1		[K3] [D]
303-2		-O-ring	-1		[K3] [D]
304	S8012101	O-ring	2		[K3]
305	A056-0043D001	Buffer Seal	1		[R AA056-0041]
	AA056-0041	Buffer Seal	1		[K3]

EHB40 – Back Head Ass'y



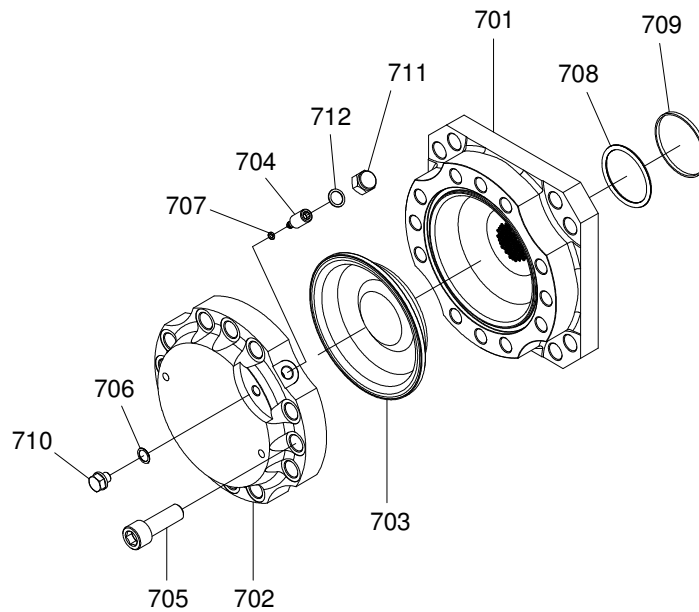
ITEM	PART NO.	PART NAME	QTY	S/N	REMARKS
+	B402-9804	Back Head Ass'y	1		
401	B402-4001	Back Head	1		
402	A062-0041	Minimess Coupling	1		BSP 1/4
403	2181-1890D003	Plug	2		BSP 3/8
404	S8012101	O-ring	1		[K5]
405	S8000141	O-ring	2		[K5]

EHB40 – Front Head Ass’y



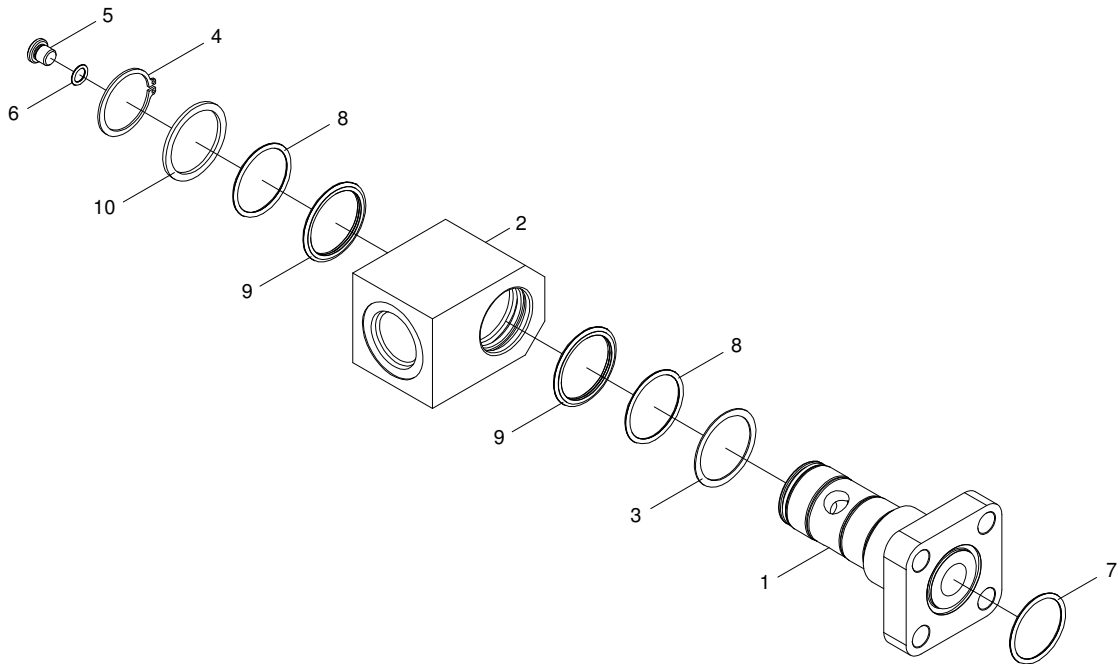
ITEM	PART NO.	PART NAME	QTY	S/N	REMARKS
+	B402-9805	Front Head Ass'y	1		
501	B402-5001	Front Head	1		
502	B402-5002	Thrust Ring	1		
503	B400-5021	Chisel Bush	1		
504	AB402-0001	Front Bush	1		
505	B400-5023	Chisel Pin	2		
506	B400-5024	Stop Pin	5		
507	A031-0006	PU-Sleeve	7		
508	A061-0034	Plug	2		BSP 1/4
509	A061-0046	Plug	1		BSP 1/4
510	S8000181	O-ring	1		[K5]
511	S8000111	O-ring	3		[K5]
512	A083-1066	O-ring	1		[K5]
513	A021-0003	Lock Pin	1		
514	S6710052	Grease Nipple	1		

EHB40 – Accumulator Ass'y



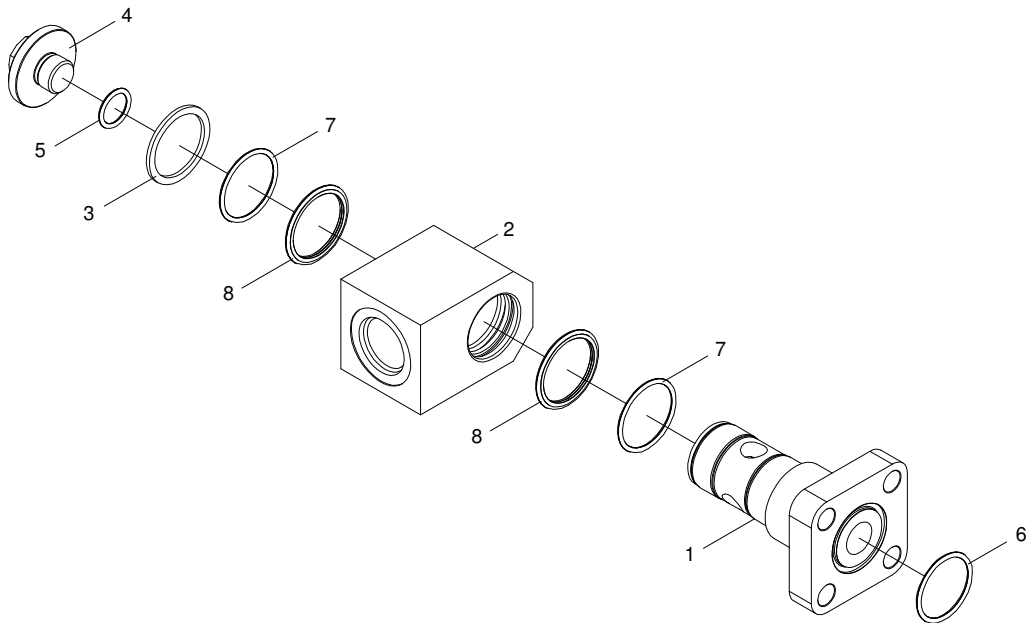
ITEM	PART NO.	PART NAME	QTY	S/N	REMARKS
+	B400-9902	Accumulator Ass'y	1		
701	B350-3001	Accumulator Body	1		
702	B400-3002	Accumulator Cover	1		
703	B350-3006	Diaphragm	1		
704	A082-0060	Acc. Charging Valve	1		
705	A011-0005	Hex. Socket Bolt	12		
706	S8000151	O-ring	1		[K5]
707	S8000051	O-ring	1		[K5]
708	S8000951	O-ring	1		[K5]
709	A052-0016	Back-up Ring	1		[K5]
710	A061-0035	Plug	1		
711	A061-0049	Cap	1		
712	S8000201	O-ring	1		[K5]

EHB40 – Swivel Joint (1/3)



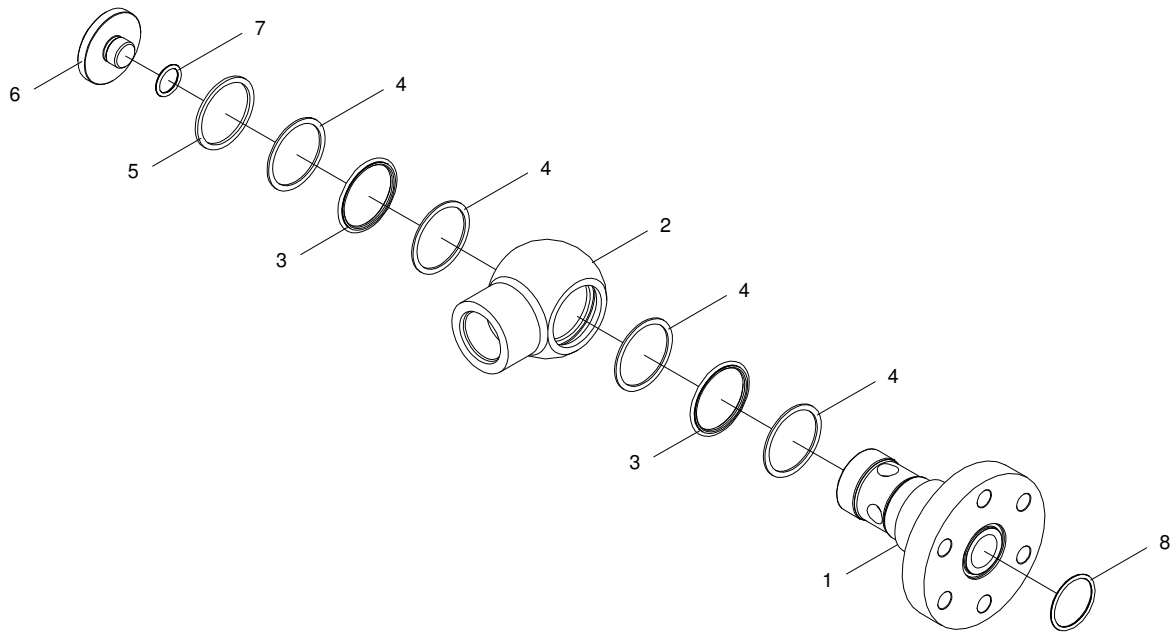
ITEM	PART NO.	PART NAME	QTY	S/N	REMARKS
+	A062-9004	Swivel Joint	1		[R AA062-0066]
1	A062-0078	Swivel Body	1		
2	A062-0080	Swivel Rotator	1		
3	A015-0011	Washer	2		[R AA015-0003]
	AA015-0003	Washer	1		
4	S6500480	Snap Ring	1		
5	A061-0034	Plug	1		BSP 1/4
6	S8000111	O-ring	1		
7	A051-2252	O-ring	1		
8	S8000501	O-ring	2		
9	A056-0061	Rotary Seal	2		
9-1		-Seal Ring	-1		[D]
9-2		-O-ring	-1		[D]
10	AA015-0004	Washer	1		

EHB40 – Swivel Joint (2/3)



ITEM	PART NO.	PART NAME	QTY	S/N	REMARKS
+	AA062-0066	Swivel Joint	1		[R AA062-0031]
1	AA062-0057	Swivel Body	1		
2	AA062-0067	Swivel Rotator	1		
3	AA015-0011	Washer	1		
4	AA062-0034	Stopper	1		
5	S8000241	O-ring	1		
6	A051-2252	O-ring	1		
7	S8000501	O-ring	2		
8	A056-0061	Rotary Seal	2		
		-Seal Ring	-1		[D]
		-O-ring	-1		[D]

EHB40 – Swivel Joint (3/3)



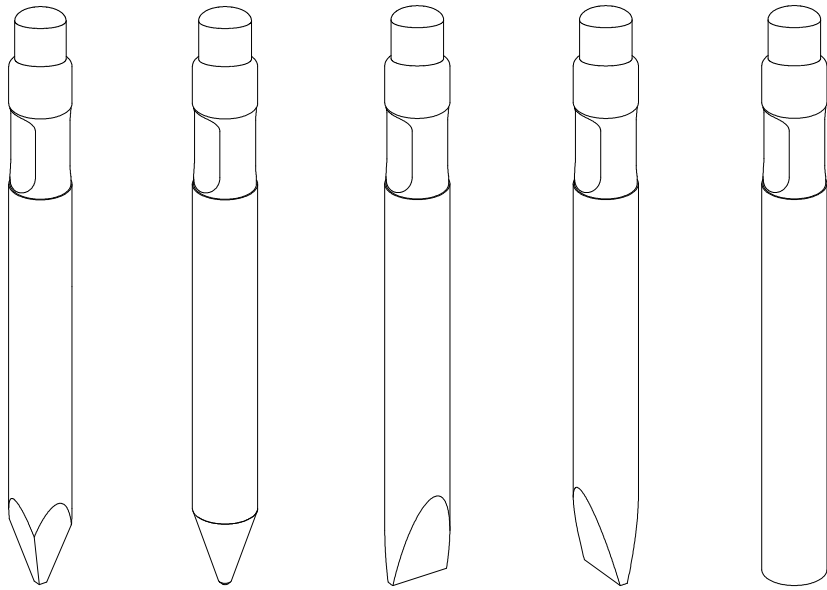
ITEM	PART NO.	PART NAME	QTY	S/N	REMARKS
+	AA062-0031	Swivel Joint	1		1 1/4" - 1 1/4" [R AA062-0049]
+	AA062-0049	Swivel Joint	1		1 1/4" - 1 1/2"
1	AA062-0032	Swivel Body	1		
2	AA062-0035	Swivel Rotator	1		[R AA062-0050]
	AA062-0050	Swivel Rotator	1		
3	AA060-0001D003	O-ring	2		[R AA055-0003]
	AA055-0003	Quad Ring	2		[R A056-0061]
	A056-0061	Rotary Seal	2		[K4]
4	S8070511	Back-up Ring	2		[for AA060-0001D003]
	AA052-0005	Back-up Ring	2		[for AA055-0003]
	AA052-0005	Back-up Ring	4		[K4] [for A056-0061]
5	AA015-0019	Washer	1		
6	AA062-0034	Stopper	1		
7	S8000241	O-ring	1		[K4]
8	A051-2252	O-ring	1		[K4]

EHB40 – Seal Kit

ITEM	PART NO.	PART NAME	QTY	S/N	REMARKS
K1	AB402-0053	Seal Kit	1		[K2+K3+K4+K5]
K2	AB402-0008	Piston Lower Part Seal Kit	1		
	AA053-0035	-Buffer Ring	-1		
	AA053-0036	-U-Packing	-1		
	AA054-0017	-Dust Seal	-1		
K3	AB402-0004	Piston Upper Part Seal Kit	1		
	A057-0017	-Gas Seal	-1		
	A056-0040	-Step Seal	-2		
	S8012101	-O-ring	-2		JIS G210-HsA90
	AA056-0041	-Buffer Seal	-1		
K4	AA062-0101	Swivel Joint Seal Kit	2		
	A056-0061	-Rotary Seal	-2		
	AA052-0005	-Back-up Ring	-4		
	S8000241	-O-ring	-1		
	A051-2252	-O-ring	-1		
K5	AB402-0005	Normal Seal Kit	1		
	S8000051	-O-ring	-1		JIS P5-HsA90
	S8000111	-O-ring	-8		JIS P11-HsA90
	S8000141	-O-ring	-7		JIS P14-HsA90
	S8000151	-O-ring	-1		JIS P15-HsA90
	S8000181	-O-ring	-3		JIS P18-HsA90
	S8000201	-O-ring	-1		JIS P20-HsA90
	S8000241	-O-ring	-3		JIS P24-HsA90
	S8000291	-O-ring	-3		JIS P29-HsA90
	S8000651	-O-ring	-1		JIS P65-HsA90
	S8000901	-O-ring	-1		JIS P90-HsA90
	S8000951	-O-ring	-1		JIS P95-HsA90
	S8010251	-O-ring	-2		JIS G25-HsA90
	S8010301	-O-ring	-1		JIS G30-HsA90
	S8012101	-O-ring	-1		JIS G210-HsA90
	S8060181	-Back-up Ring	-1		for JIS P18-HsA90, Bias-cut
	S8090251	-Back-up Ring	-1		for JIS G25-HsA90, Bias-cut
	A052-0016	-Back-up Ring	-1		
	A053-0085D032	-Static Seal	-3		
	A083-1066	-O-ring	-1		JIS S9-HsA90
	A052-0024	-Protect Ring	-1		

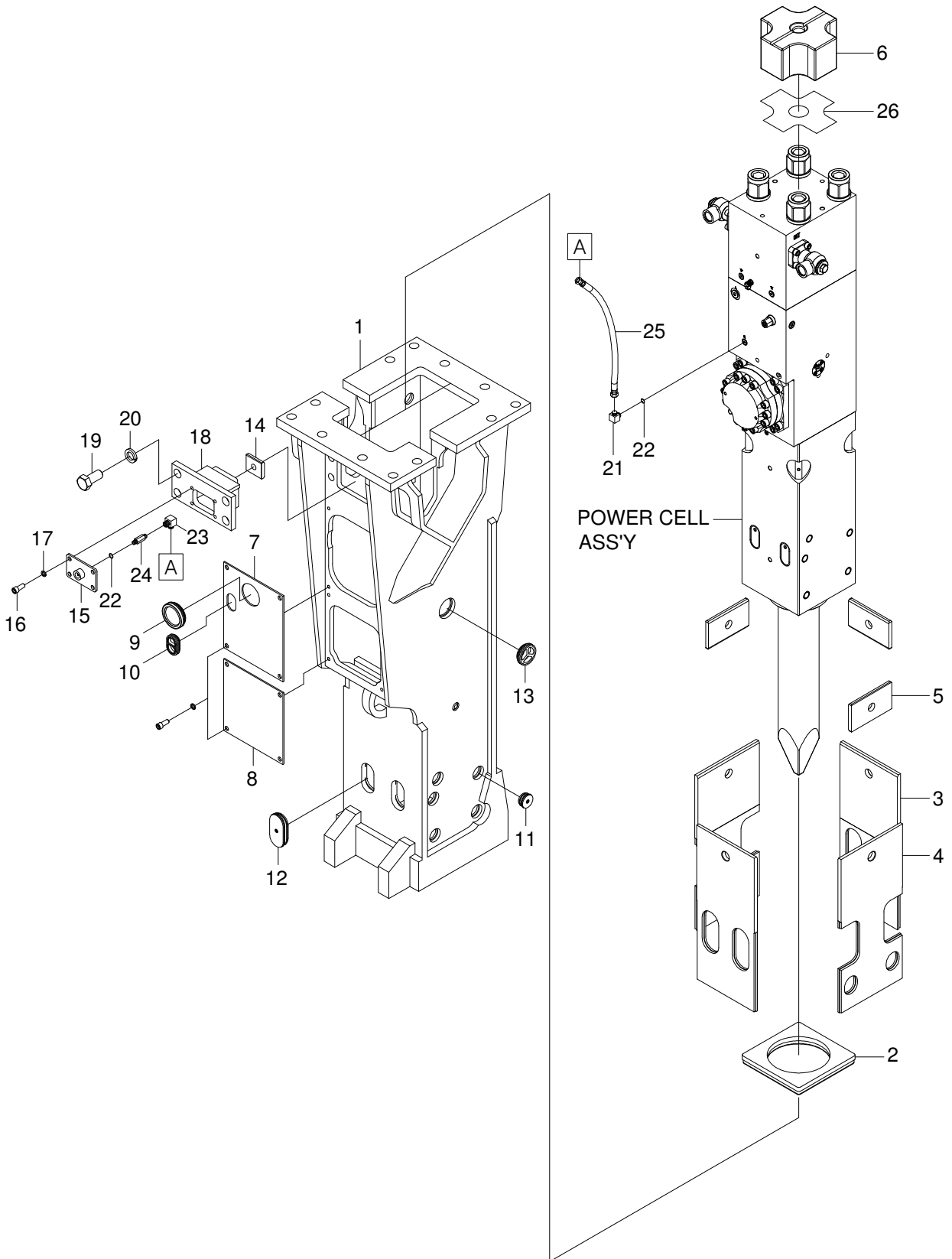
EHB40 – Tools (Chisels)

TOOL SHAPE



TYPE OF TOOL		Moil Wedge (Pyramid)	Moil Point (Conical)	Flat Wedge -Horizontal (Cross-cut)	Flat Wedge - Vertical (Inline-cut)	Flat End (Blunt)
PART NO.		B400-6006	B400-6007	B400-6008	B400-6009	B400-6010
TOOL DIAMETER	mm	165	165	165	165	165
	(in.)	(6.5)	(6.5)	(6.5)	(6.5)	(6.5)
TOOL LENGTH	mm	1450	1450	1450	1450	1300
	(in.)	(57)	(57)	(57)	(57)	(51)
TOOL WEIGHT	kg	200	199	215	215	195
	(lbs)	(441)	(439)	(474)	(474)	(430)

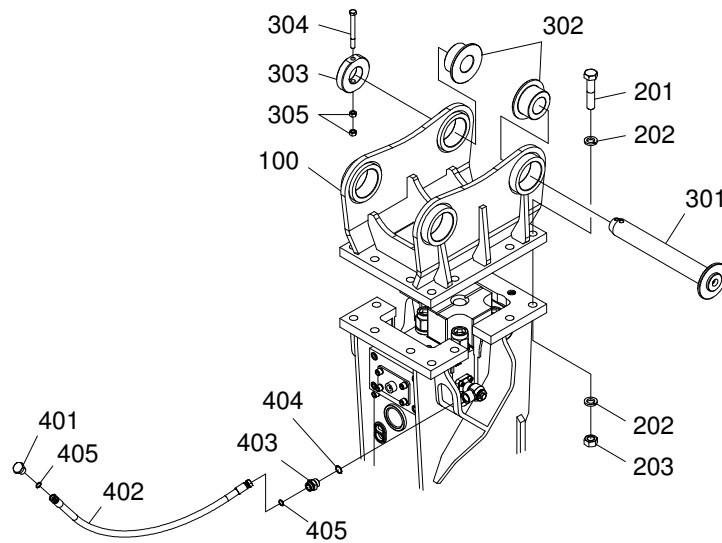
EHB40 – Bracket Ass’y; BA



EHB40 – Bracket Ass’y; BA

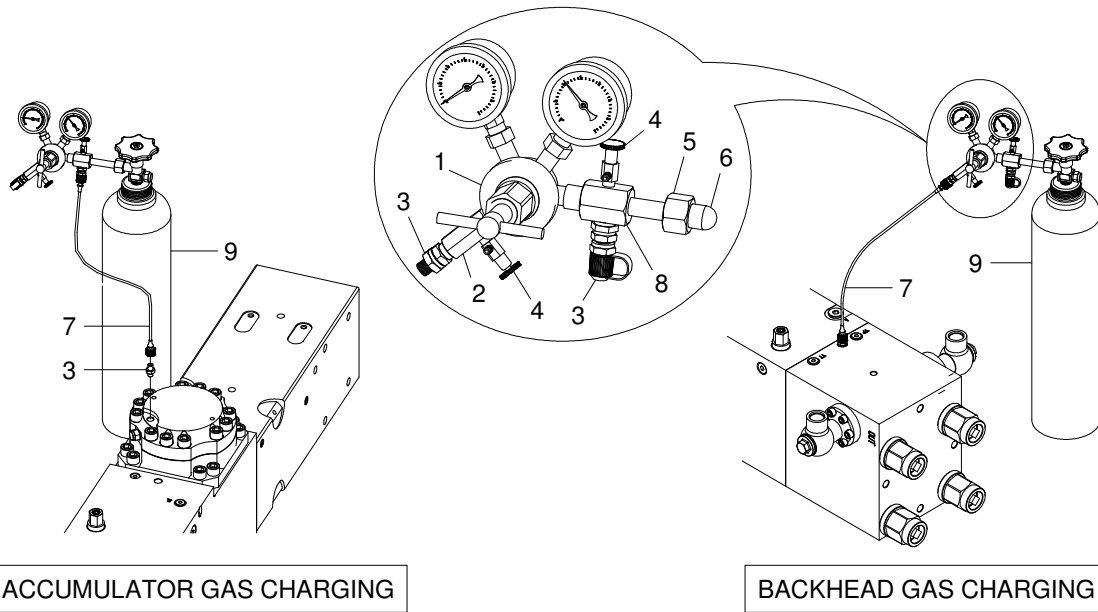
ITEM	PART NO.	PART NAME	QTY	S/N	REMARKS
+	B402-9402	Bracket Ass’y	1		
1	B402-7035	Bracket	1		
2	B400-7266	Lower Damper	1		
3	B400-7265	Wear Plate (2)	2		
4	B400-7264	Wear Plate (1)	2		
5	B220-7084	Support Damper	3		[R AB250-0094]
	AB250-0094	Support Damper	3		
6	B400-7057	Upper Damper	1		[R B400-7057]
	B400-7267	Upper Damper	1		
7	B402-7058	Cover 1	1		
8	B402-7059	Cover 2	1		
9	A059-0010	Sealing Plug	1		
10	B132-7080	Sealing Plug (1)	1		
11	A059-0017	Plug	13		
12	A059-0014	Plug	4		
13	B220-7092	Sealing Plug	1		
14	B050-7055	Wear Plate (2)	1		[R AB080-0006]
	AB080-0006	Wear Plate (2)	1		
15	B250-7099	Cover Plate	1		
16	S2221361	Hex. Socket Bolt	12		M16x2.0xL40-10.9T
17	S5110911	Spring Washer	12		
18	B402-7027	P/C Supporter	1		
19	S0182763	Hex. Bolt	4		M36x4.0xL80-10.9T
20	S5101713	Spring Washer	4		
21	A062-9007	Swivel Joint	1		
22	S8000141	O-ring	2		JIS P14-HsA90
23	H002-0047D003	Elbow; Union	1		[R H002-0047D004]
	H002-0047D004	Elbow; Union	1		
24	H002-0012D029	Adapter	1		[R H002-0012D046]
	H002-0012D046	Adapter	1		
25	H001-0016D254	Hose	1		
26	B500-7082	Shim	AR		

EHB40 – Mounting Adapter and Hoses



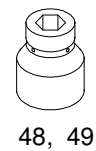
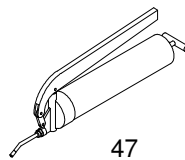
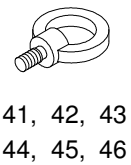
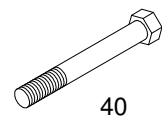
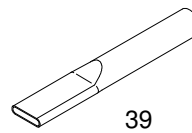
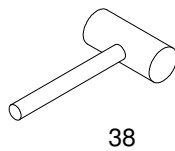
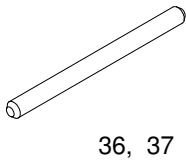
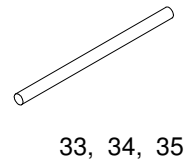
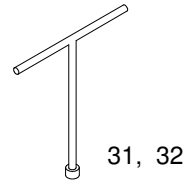
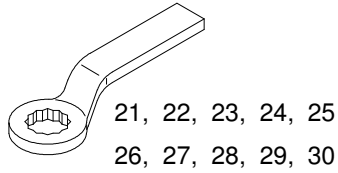
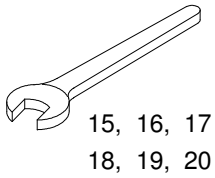
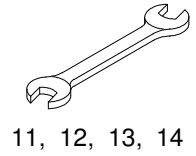
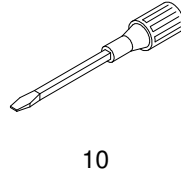
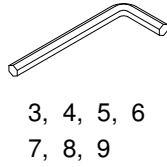
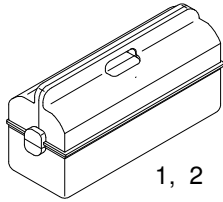
ITEM	PART NO.	PART NAME	QTY	S/N	REMARKS
100	B400-7199	Mounting Adapter	1		
200	B400-0605	Adapter Fasteners Set	1		
201	S0183963	-Hex. Head Bolt	-12		M36x4xL150-10.9T
202	S5101713	-Spring Washer	-24		M36(Type 1)
203	S4013743	-Hex. Nut	-12		M36x4-10T
300	B280-9950Do	Mounting Pin Set	2		
301	B280-9952Do	-Bracket Pin	-1		
302	B280-9957Do	-Spacer	-2		
303	B280-9955Do	-Stop Ring	-2		
304	S0167261	-Hex. Head Bolt	-1		M16x2xL170-10.9T
305	S4002942	-Hex. Nut	-2		M16x2-10T
400	B400-0606	Hose Set	2		
401	A061-0026D004	-Hose Plug	-1		SAE ORFS #20
402	H001-0001D084	-Hose	-1		ORFS #20-L2300-P350
403	A062-0054	-Adapter	-1		ORFS #20-BSP 1 1/4
	A062-0067	-Adapter	-1		ORFS #20-BSP 1 1/2 [for AA062-0049 Swivel Joint]
404	S8000381	-O-ring	-1		JIS P38-HsA90
	S8000441	-O-ring	-1		JIS P44-HsA90 [for AA062-0049 Swivel Joint]
405	A051-0252	-O-ring	-2		AS568-025 HsA90

EHB40 – Gas Charging Kit



ITEM	PART NO.	PART NAME	QTY	S/N	REMARKS
+	A090-0054	Gas Charging Kit	1		Excl. item 9
1	A092-0005	Pressure Regulator	1		KS B4603
2	A062-0043	Adapter	1		
3	A062-0041	Minimes Coupling	3		BSP 1/4
4	A082-0016	Exhaust Valve	2		BSPT 1/8
5	A012-0002	Cap Nut	1		KS B6214, W23-14
6	A062-0018	Coupling	1		KS B6214
7	A075-0028	Hose	1		S12.65x1.5-L1000(5800psi)
8	A062-0052	Adapter	1		
9	A090-0007	Nitrogen Gas Bottle	1		[S]

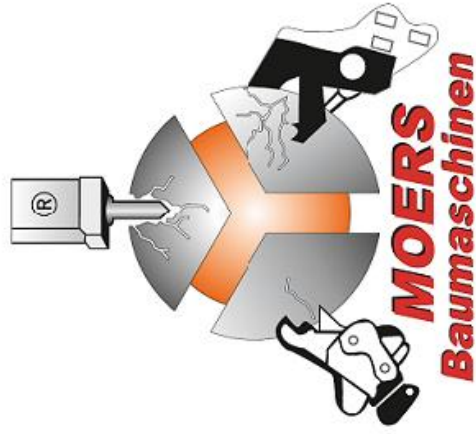
EHB40 – Maintenance Tool Kit



EHB40 – Maintenance Tool Kit

ITEM	PART NO.	PART NAME	Standard Tool Kit	Option Tool Kit
			BA	BA
	AB402-0006A	Tool Kit	✓	
	AB402-0007	Tool Kit		✓
2	2199-9004	Tool Box(Large)	1	1
4	T6550007	L-Wrench 6		1
5	T6550009	L-Wrench 8	1	1
6	T6550011	L-Wrench 10	1	1
7	T6550013	L-Wrench 12		1
8	T6550015	L-Wrench 14		1
9	T6550018	L-Wrench 17		1
10	T7050003	Screw Driver(—)	1	1
12	T6510075	Spanner 19x22		1
15	T6510022	Spanner 30	1	1
16	T6510025	Spanner 36		1
19	T6510030	Spanner 50		1
20	T6510031	Spanner 55	1	1
24	A090-0031	Ring Wrench 55		1
29	A090-0051	Ring Wrench 85	1	1
32	T6640009	T-Wrench 14		1
36	A090-0042	Stop-Pin Tool 20	1	1
38	T7260057	Hammer	1	1
39	2199-1005	Pipe		1
41	S3140031	Eye Bolt M12		1
43	S3140051	Eye Bolt M20		2
45	S3140071	Eye Bolt M30		1
47	2199-9008	Grease Gun	1	1

ISO9001 ISO14001



MOERS

Spezialgeräte für Abbruch und Recycling
Spezialbereich Hydraulik - Hämmer

Baumaschinen



Moers Baumaschinen GmbH & Co. KG - Färberstr. 4 - 58119 Hagen - Tel.: 02334 / 90 66 - 0 Fax 02334 / 90 66 - 26

info@moers-baumaschinen.de
www.moers-baumaschinen.de